

**Amyloid Precursor Protein (APP) (NT). Rabbit Polyclonal Antibody**  
Rabbit anti- $\beta$ -Amyloid Peptide Precursor (Amyloid- $\beta$  Peptide N-terminal)

**BACKGROUND**

Accumulation of the amyloid- $\beta$  peptide ( $A\beta$ ) in the cerebral cortex is a critical event in the pathogenesis of Alzheimer's disease. The  $\beta$ -amyloid protein precursor (APP) is cleaved by  $\beta$ -secretase, producing a soluble derivative of the protein and a membrane anchored 99-amino acid carboxy-terminal fragment (C99). The C99 fragment serves as substrate for  $\gamma$ -secretase to generate the 4 kDa amyloid- $\beta$  peptide ( $A\beta$ ), which is deposited in the brains of all sufferers of Alzheimer's disease.

**ORDERING INFORMATION**

**CATALOG NUMBER**  
X1133P

**SIZE**

100  $\mu$ g

**FORM**

Unconjugated

**HOST/CLONE**

Rabbit

**FORMULATION**

Provided in phosphate buffered saline solution containing 0.02% sodium azide as a preservative

**CONCENTRATION**

See vial for concentration

**ISOTYPE**

IgG

**APPLICATIONS**

Western Blot

**SPECIES REACTIVITY**

Human, Mouse, Rat

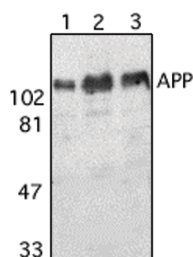
**ACCESSION NUMBER**

Human P05067

**IMMUNOGEN**

Synthetic peptide corresponding to amino acids 653 to 662 of human amyloid A4 protein precursor (APP) or 1 to 10 of the 4kDa Amyloid- $\beta$  peptide generated by  $\beta$  and  $\gamma$ -secretases. This sequence is identical to those of rabbit, pig, bovine, guinea pig and chicken.

**Western blot analysis using APP (Ab-NT) antibody (Cat. No. X1133P) on human (1), mouse (2) and rat (3) brain tissue lysate.**



**POSITIVE CONTROL/TISSUE EXPRESSION**

Murine brain lysate

**COMMENTS**

Detects APP and Ab peptide by Western blot at 0.5 to 1  $\mu\text{g/ml}$ . Detects an approximately 120 kDa band in human, mouse and rat brain tissue lysates. Optimal concentration should be evaluated by serial dilutions.

**PURIFICATION**

Antigen Immunoaffinity Purification

**SHIP CONDITIONS**

Ship at ambient temperature, freeze upon arrival

**STORAGE CUSTOMER**

Product should be stored at  $-20^{\circ}\text{C}$ . Aliquot to avoid freeze/thaw cycles

**STABILITY**

Products are stable for one year from purchase when stored properly

**REFERENCES**

1. Ponte, P., et al. A new A4 amyloid mRNA contains a domain homologous to serine proteinase inhibitors. Nature 1988, 331, 525-527.
2. Selkoe, D.J. Cell biology of the amyloid beta-protein precursor and the mechanism of Alzheimer's disease. Annu. Rev. Cell Biol. 1994, 10, 373-403

**PRODUCT SPECIFIC REFERENCES**