

VIPR2. Mouse cln AS69 Monoclonal Antibody, Human, Rat

Anti-Vasoactive Intestinal Peptide Receptor 2, Human, Rat

BACKGROUND

There are 2 Vasoactive intestinal peptide receptors, VIPR1 and VIPR2. These receptors are G-protein-coupled receptors. VIP receptors is differentially expressed on T cells, macrophages, mast cells, platelets, and non-immune cells. VIP receptors are found in the CD3 positive zone around lymphoid follicles. In the spleen, VIP receptors are detected in periarterial lymphatic sheaths. In the thymus, VIP receptors are present in cortex and medulla. VIP receptors are expressed in tumor metastasis and on human colonic adenocarcinoma cell lines, HT29, SW403, DLD-1 and Caco-2. VIPR1 mediates suppression of chemotaxis and matrix metalloproteinase expression elicited by some cytokines and chemokines. Although structurally-related to a second receptor for VIP (VIPR2), there are differences in the expression and function of VIPR1 and VIPR2. VIPR1 on tumor cells mediates tumor cell migration induced by VIP.

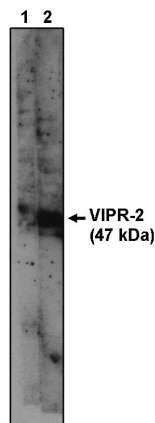
VIPR receptors are novel targets. They should be of interest to researchers in many fields since they are broadly related. Differential expression may be important in tumor cell diagnosis and regulation. These receptors are likely targets for drug discovery.

IMMUNOGEN

Synthetic peptide corresponding to amino acids 105-122 of human VIPR2 receptor.

Legend:

Western blot analysis using anti-VIPR2 antibody on A431 cell lysate at 1 µg/ml (1) and 10 µg/ml (2).



ORDERING INFORMATION

CATALOG NUMBER
Z140M

SIZE
100 µg

FORM
Purified

HOST/CLONE
Mouse cln AS69

FORMULATION
Provided as 0.2 µm sterile filtered solution in phosphate buffered saline with 0.08% sodium azide

CONCENTRATION
1 mg/ml

ISOTYPE
IgG1

APPLICATIONS
Western Blotting
Immunohistochemistry
Paraformaldehyde Fixed Sections

SPECIES REACTIVITY

Human, Rat

For research use only. Not for use in human diagnostics or therapeutics.

Exalpa Biologicals, Inc. 86 Rosedale Road Watertown, MA 02472
Tel: 800.395.1137 Fax: 866.924.5100 www.exalpa.com info@exalpa.com

Page 1 of 2
Cat. No. Z140M

POSITIVE CONTROL

A431 cell lysate

COMMENTS

Western Blot: This antibody has been used at 1-10 ug/ml. Detects a 47 kDa band.

SHIP CONDITIONS

Ship at ambient temperature, freeze upon arrival

STORAGE CUSTOMER

Product should be stored at -20 degrees C. Aliquot to avoid freeze/thaw cycles

STABILITY

Products are stable for one year from purchase when stored properly

REFERENCES

1. Goetzl, E.J., et al. "Specific recognition of the human neuroendocrine receptor for vasoactive intestinal peptide by anti-peptide antibodies." Mol. Cell. Neurosci. 1994, 5, 145-152
2. Lutz, E.M., et al. "Structure of the human VIPR2 gene for vasoactive intestinal peptide receptor type 2." FEBS Lett. 1999, 458, 197-203

LAST MODIFIED 9/16/2002