

**Lass2. Rabbit Antigen Immunoaffinity Purified Polyclonal , Human**

LAG1 longevity assurance homolog 2, Tumor metastasis-suppressor gene 1 protein, SP260

**BACKGROUND**

LASS2, a human homologue of the yeast longevity assurance gene LAG1 is highly expressed in liver and kidney as compared to the expression of the human LAG1 homologue LAG1Hs-1. LASS2 is located on chromosome 1q11. The LASS2 protein interacts with several membrane-associated receptors or transporters. LASS2 protein inhibits the colony formation of human hepatoma cells in vitro, which suggests that this gene may be involved in the regulation of cell growth.

**ORDERING INFORMATION**

**CATALOG NUMBER**  
X2307P

**SIZE**  
50 µg

**FORM**  
Affinity Purified

**HOST/CLONE**  
Rabbit

**FORMULATION**  
Provided as solution in phosphate buffered saline with 0.08% sodium azide

**CONCENTRATION**  
Lot specific, see vial

**ISOTYPE**

**APPLICATIONS**  
Western Blot

**IMMUNOGEN**

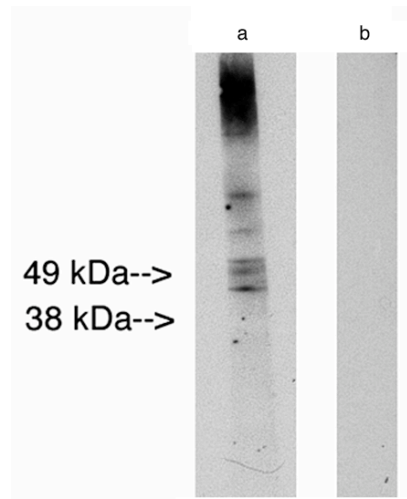
Synthetic peptide derived from human Lass2 protein

**SPECIES REACTIVITY**

Human

**Legend:**

Western blot analysis using LAG1 longevity assurance homolog 2 (Cat. # X2307P) at 10ug/ml on human placenta lysate (Cat. # X1635C) 14 ug/lane. Lane A] antibody alone, Lane B] conjugate alone. Visualized using Pierce West Femto substrate system. Anti Rabbit secondary used at 1:10K dilution (Cat. # X1207M). Exposure for 5 minutes



**For research use only. Not for use in human diagnostics or therapeutics.**

**POSITIVE CONTROL/TISSUE EXPRESSION**

liver and kidney

**COMMENTS**

Antibody can be used for Western blotting (1:400 starting dilution). Optimal concentration should be evaluated by serial dilutions.

**SHIP CONDITIONS**

Ship on gel ice, store at -20°C immediately upon arrival

**STORAGE CUSTOMER**

Product should be stored at -20°C. Aliquot to avoid freeze/thaw cycles

**STABILITY**

Products are stable for one year from purchase when stored properly

**REFERENCES**

1: Becker I, Wang-Eckhardt L, Yaghootfam A, Gieselmann V, Eckhardt M. Differential expression of (dihydro)ceramide synthases in mouse brain: oligodendrocyte-specific expression of CerS2/Lass2. *Histochem Cell Biol.* 2008 Feb;129(2):233-41. Epub 2007 Sep 28.

2: Wang X, Carré W, Saxton AM, Cogburn LA. Manipulation of thyroid status and/or GH injection alters hepatic gene expression in the juvenile chicken. *Cytogenet Genome Res.* 2007;117(1-4):174-88.

3: Senkal CE, Ponnusamy S, Rossi MJ, Bialewski J, Sinha D, Jiang JC, Jazwinski SM, Hannun YA, Ogretmen B. Role of human longevity assurance gene 1 and C18-ceramide in chemotherapy-induced cell death in human head and neck squamous cell carcinomas. *Mol Cancer Ther.* 2007 Feb;6(2):712-22.

4: Yu Y, Lu H, Pan H, Ma JH, Ding ZJ, Li YY. Expression of LASS2 controlled by LAG1 or ADH1 promoters cannot functionally complement Lag1p. *Microbiol Res.* 2006;161(3):203-11. Epub 2005 Sep 22.

**LAST MODIFIED** 3/12/2008

**For research use only. Not for use in human diagnostics or therapeutics.**