

Lass4. Rabbit Antigen Immunoaffinity Purified Polyclonal , Human

BACKGROUND

It is thought that Lass4 may be either a bona fide (dihydro)ceramide synthase or a modulator of its activity. When overexpressed in cells is involved in the production of sphingolipids containing different fatty acid donors (N-linked stearyl- (C18) or arachidoyl- (C20) ceramides) in a fumonisin B1-independent manner.

ORDERING INFORMATION

CATALOG NUMBER
X2298P

SIZE
100 µg

FORM
Affinity Purified

HOST/CLONE
Rabbit

FORMULATION
Provided as solution in phosphate buffered saline with 0.08% sodium azide

CONCENTRATION
Lot specific, see vial

ISOTYPE
IgG

APPLICATIONS
Western Blot

IMMUNOGEN

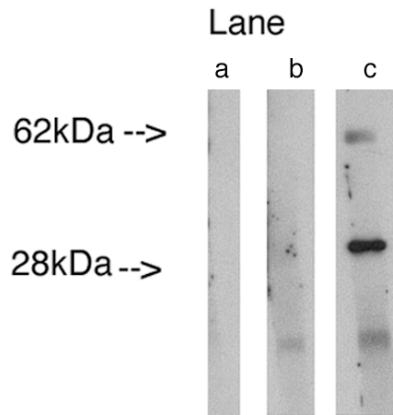
Synthetic peptide derived from human Lass4 protein.

SPECIES REACTIVITY

Human

Legend:

Western blot analysis using LAG1 longevity assurance homolog 4 (Cat.# X2298P) at 0.75ug/ml on human lung lysate 14 ug/lane. Lane A] conjugate alone, Lane B] antibody plus 27 ug blocking peptide (Cat. # X2299B), Lane C] antibody alone. Visualized using Pierce West Femto substrate system. Anti Rabbit secondary used at 1:3.5K dilution (Cat. # X1207M). Exposure for 5 minutes



For research use only. Not for use in human diagnostics or therapeutics.

POSITIVE CONTROL/TISSUE EXPRESSION

Lung and embryo

COMMENTS

Antibody can be used for Western blotting (1:400 starting dilution). Optimal concentration should be evaluated by serial dilutions.

SHIP CONDITIONS

Ship on gel ice, store at -20°C immediately upon arrival

STORAGE CUSTOMER

Product should be stored at -20°C. Aliquot to avoid freeze/thaw cycles

STABILITY

Products are stable for one year from purchase when stored properly

REFERENCES

1. Min, J., et al. "(Dihydro)ceramide synthase 1 regulated sensitivity to cisplatin is associated with the activation of p38 mitogen-activated protein kinase and is abrogated by sphingosine kinase 1." Mol. Cancer Res. 2007, 5(8):801-812

2. Ruckhaberle, E., et al. "Microarray analysis of altered sphingolipid metabolism reveals prognostic significance of sphingosine kinase 1 in breast cancer." Breast Cancer Res Treat. 2007 Dec 4 [Epub ahead of print]

LAST MODIFIED 3/12/2008

For research use only. Not for use in human diagnostics or therapeutics.