

**phospho-Sphingosine Kinase 1,(pS225), Mouse Reactive. Rabbit Antigen Immunoaffinity Purified Polyclonal , Mouse**

**BACKGROUND**

Activation of Sphingosine kinase (Sphk) increases the bioactive lipid, sphingosine 1-phosphate (S1P) and has been observed in a variety of cancer cells. Phosphorylation of sphingosine by sphingosine kinase (Sphk) is the rate-limiting step in the cellular synthesis of S1P. A principle activation event is the phosphorylation of serine 225 of sphingosine kinase 1. Inhibition of Sphk1 phosphorylation and hence, Sphk activity is an important target for the development of drugs for cancer, inflammation, cardioprotection as well as a many other indications.

**ORDERING INFORMATION**

**CATALOG NUMBER**  
X1849P

**SIZE**  
10 Miniblots

**FORM**  
Affinity Purified

**HOST/CLONE**  
Rabbit

**FORMULATION**  
Provided as solution in phosphate buffered saline with 0.08% sodium azide

**CONCENTRATION**  
Lot Specific

**ISOTYPE**  
IgG

**APPLICATIONS**  
Western Blot

**IMMUNOGEN**

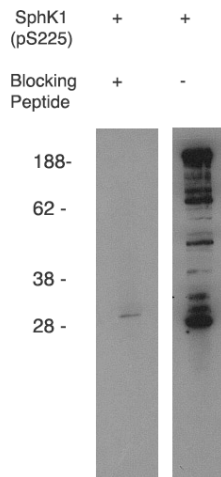
A synthetic peptide incorporating the serine 225 phosphorylation site of mouse sphingosine kinase 1

**SPECIES REACTIVITY**

Mouse

**Legend:**

Western blot using anti-mouse SphK1 (pS225) (Cat. No. X1849P) on mouse B-cell lysate. Antibody used at 1 µg/ml with phosphorylated blocking peptide (Cat. No. X1877B) (lane A) and without (laneB).



**For research use only. Not for use in human diagnostics or therapeutics.**

**POSITIVE CONTROL/TISSUE EXPRESSION****COMMENTS**

Antibody can be used for Western blotting (1-5µg/ml). Antibody shows some cross reactivity (~10% by ELISA) with other phosphoserine containing proteins. Optimal concentration should be evaluated by serial dilutions.

**SHIP CONDITIONS**

Ship on gel ice, store at -20°C immediately upon arrival

**STORAGE CUSTOMER**

Product should be stored at -20°C. Aliquot to avoid freeze/thaw cycles

**STABILITY**

Products are stable for one year from purchase when stored properly

**REFERENCES**

1. Kihara A, Ikeda M, Kariya Y, Lee EY, Lee YM, Igarashi Y, Sphingosine-1-phosphate lyase is involved in the differentiation of F9 embryonal carcinoma cells to primitive endoderm. *J. Biol. Chem.* 278 (2003) 14578-14585
2. Choi OH, Kim JH, Kinet JP, Calcium mobilization via sphingosine kinase in signalling by the FcεR1 antigen receptor. *Nature* 380 (1996) 634-636
3. Olivera A, Kohama T, Edsall L, Nava V, Cuvillier O, Poulton S, Spiegel S, Sphingosine kinase expression increases intracellular sphingosine-1-phosphate and promotes cell growth and survival. *J. Cell Biol.* 147 (1999) 545-558
4. Chun J, Goetzl EJ, Hla T, Igarashi Y, Lynch KR, Moolenaar W, Pyne S, Tigyi G, International union of pharmacology. XXXIV. Lysophospholipid receptor nomenclature. *Pharmacol. Rev.* 54 (2002) 265-269
5. Hla T, Signaling and biological actions of sphingosine 1-phosphate. *Pharmacol. Res.* 47 (2003) 401-407
6. Gregorius K, Mouritsen S, Elsner HI, Hydrocoating: a new method for coupling biomolecules to solid phases. *J. Immunol. Methods*, 181 (1995) 65-73
7. Zhang JH, Chung TDY, Oldenburg KR, A simple statistical parameter for use in evaluation and validation of high throughput screening assays. *J. Biomol. Screening*, 4 (1999) 67-73

**LAST MODIFIED** 6/25/2008

**For research use only. Not for use in human diagnostics or therapeutics.**