

**Interferon regulatory factor 7 (CT) /IRF7. Rabbit Polyclonal Antibody , Human, Mouse, Rat**

IRF7 (CT): Interferon regulatory factor 7

**BACKGROUND**

Interferons (IFNs) are involved in a multitude of immune interactions during viral infections and play a major role in both the induction and regulation of innate and adaptive antiviral mechanisms. During infection, host-virus interactions signal downstream molecules such as transcription factors such as IFN regulatory factor-3 (IRF3) which can act to stimulate transcription of IFN-a/b genes. IRF7 has been shown to play a role in the transcriptional activation of virus-inducible cellular genes, including interferon beta chain genes. IRF7 play a major role in the innate immune pathway, interacting with the Toll-like receptor (TLR) adaptor proteins MyD88 and Tirp/TRAM and functioning as an intermediate TLR4 and TLR9 signaling. There are at least four differentially spliced isoforms of IRF7, although their function has not been clearly established.

**ORDERING INFORMATION**

**CATALOG NUMBER**  
X1798P  
**SIZE**  
100 µg  
**FORM**  
Unconjugated  
**HOST/CLONE**  
Rabbit  
**FORMULATION**  
Provided as solution in phosphate buffered saline with 0.02% sodium azide  
**CONCENTRATION**  
0.5 mg/ml  
**ISOTYPE**  
IgG  
**APPLICATIONS**  
Western Blot

**IMMUNOGEN**

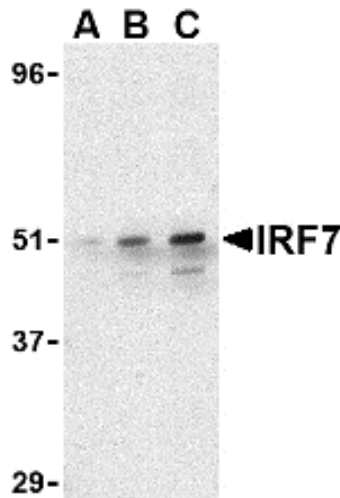
Rabbit polyclonal IRF7 antibody was raised against a peptide corresponding to 14 amino acids near the carboxy-terminus of human IRF7

**SPECIES REACTIVITY**

Human, Mouse, Rat

**Legend:**

Western blot analysis of IRF7 in 293 whole cell lysate with IRF7 antibody at (A) 0.5 and (B) 1 µg/ml



**For research use only. Not for use in human diagnostics or therapeutics.**

**POSITIVE CONTROL/TISSUE EXPRESSION**

Expressed predominantly in spleen, thymus and peripheral blood leukocytes, IRF7 is located in the nucleus and cytoplasm. The phosphorylated and active form accumulates selectively in the nucleus.

**COMMENTS**

IRF7 antibody can be used for detection of IRF7 by Western blot at 1 - 2 ug/ml.

**SHIP CONDITIONS**

Ship at ambient temperature, freeze upon arrival

**STORAGE CUSTOMER**

Product should be stored at -20°C. Aliquot to avoid freeze/thaw cycles

**STABILITY**

Products are stable for one year from purchase when stored properly

**REFERENCES**

- 1) Malmgaard L. Induction and regulation of IFNs during viral infections. J. Interferon & Cyto. Res. 2004; 24:439-54. Sato M, Suemori H, Hata N, et al. Distinct and essential roles of transcription factors IRF-3 and IRF-7 in response to viruses for IFN-alpha/beta gene induction. Immunity 2000; 13:539-48.
- 2) Fitzgerald KA, Rowe DC, Barnes BJ, et al. LPS-TLR4 signaling to IRF-3/7 and NF-kappaB involves the toll adaptors TRAM and TRIF. J. Exp. Med. 2003; 198:1043-55.
- 3) Honda K, Yanai H, Mizutani T, et al. Role of a transductional-transcriptional processor complex involving MyD88 and IRF-7 in Toll-like receptor signaling. Proc. Natl. Acad. Sci. USA 2004; 101:15416-21.

**LAST MODIFIED** 8/30/2007

**For research use only. Not for use in human diagnostics or therapeutics.**