

Sphingosine 1-Phosphate Lyase 1. Rabbit Antigen Immunoaffinity Purified Polyclonal , Human, Mouse, Rat, Bovine

EC 4.1.2.27, SP-lyase, hSPL or Sphingosine-1-phosphate aldolase. Gene name: SGPL1 or KIAA1252

BACKGROUND

Sphingosine-1-phosphate lyase cleaves phosphorylated sphingoid bases, such as sphingosine-1-phosphate, into fatty aldehydes and phosphoethanolamine. Elevates stress-induced ceramide production and apoptosis. The catalytic activity of sphingosine 1-phosphate lyase converts sphingosine 1-phosphate to phosphoethanolamine and palmitaldehyde using Pyridoxal phosphate as a co-factor. Sphingosine 1-phosphate lyase is a type III membrane protein found in the endoplasmic reticulum. Sphingosine 1-phosphate lyase is found primarily in the liver and kidney. Sphingosine 1-phosphate lyase belongs to the group II decarboxylase family.

ORDERING INFORMATION

CATALOG NUMBER
X1631P

SIZE
10 Miniblots

FORM
Unconjugated

HOST/CLONE
Rabbit

FORMULATION
Provided as ligand affinity purified antibody in phosphate buffered saline with 0.08% sodium azide

CONCENTRATION
Lot specific, see vial label

ISOTYPE
IgG

APPLICATIONS
Western Blot

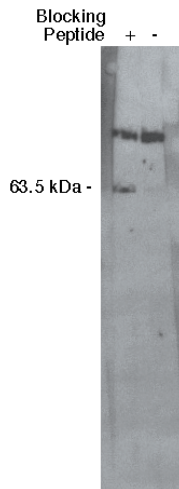
IMMUNOGEN

Synthetic peptide derived from the sphingosine 1-phosphate lyase 1 protein.

SPECIES REACTIVITY

Human, Mouse, Rat, Bovine

Western blot analysis using S1P lyase 1 antibody at a dilution of 1:400 on MDBK cell lysate (Cat. No. X1007) using Exalpha's mouse anti-rabbit HRP secondary antibody (Cat. No. X1207M) at 1:75,000.



For research use only. Not for use in human diagnostics or therapeutics.

POSITIVE CONTROL/TISSUE EXPRESSION

Madin-Darby Bovine Kidney (MDBK) cell lysate (Cat. No. X1007)

COMMENTS

Antibody can be used for Western blotting (1:400 dilution). Other applications not yet tested. Optimal concentration should be evaluated by serial dilutions.

SHIP CONDITIONS

Ship on gel ice, store at -20°C immediately upon arrival

STORAGE CUSTOMER

Product should be stored at -20°C. Aliquot to avoid freeze/thaw cycles

STABILITY

Products are stable for one year from purchase when stored properly

REFERENCES

1. Van Veldhoven P.P., et al; "Human sphingosine-1-phosphate lyase: cDNA cloning, functional expression studies and mapping to chromosome 10q22." *Biochim. Biophys. Acta* 1487:128-134 (2000).
2. Reiss U., et al; "Sphingosine-phosphate lyase enhances stress-induced ceramide generation and apoptosis." *J. Biol. Chem.* 279:1281-1290(2004).
3. Nagase T., et al; "Prediction of the coding sequences of unidentified human genes. XV. The complete sequences of 100 new cDNA clones from brain which code for large proteins in vitro.;" *DNA Res.* 6:337-345(1999).
4. Strausberg R.L., et al; "Generation and initial analysis of more than 15,000 full-length human and mouse cDNA sequences." *Proc. Natl. Acad. Sci. U.S.A.* 99:16899-16903(2002).

LAST MODIFIED 3/11/2010