

Anti - BAPTA Polyclonal Antibody

Product: rabbit anti BAPTA

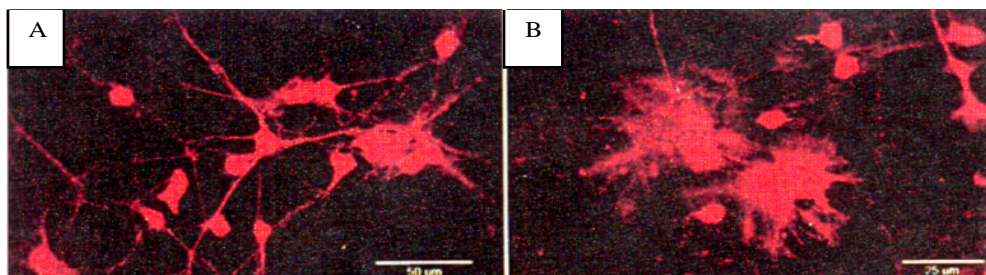
Description: BAPTA (bis(o-aminophenoxy)-ethane-N,N,N',N'-tetraacetic acid) is a calcium channel chelator. BAPTA has spawned many of the most familiar fluorescent indicators for calcium and other ions (1). BAPTA and its analogs including BAPTA-AM have proved most critical in cell physiology where they have been essential in defining the mechanisms underlying intra or intercellular calcium homeostasis (2) and calcium dependant exocytosis (3). BAPTA and its analogs may also find application in diseases which a disturbed regulation of excitatory neurotransmitter release and uptake plays a role (4). The rabbit BAPTA antibody recognizes a 69 kDa monomer and 138 kDa dimer by western blot. The immunogen used was a recombinant BAPTA-KLH.

Form: rabbit polyclonal IgG purified

Reactivity: human, rat, mouse, chicken

Formulation: Provided as 0.2µm sterile filtered solution in phosphate buffered saline with 0.08% sodium azide.

Applications: 1- 10 ug/ml for western blot analysis, immunofluorescence, immunoprecipitation.



Legend: The regional distribution of intracellular BAPTA in neuronal and non-neuronal cells after loading with BAPTA/AM into mixed cultures is detected by Exalpha's anti BAPTA antibody. Cultures were loaded with BAPTA/AM, fixed with EDC and processed for immunofluorescence staining. BAPTA staining illustrating non-selective loading of BAPTA/AM into the different cells (including neurons) in the cultures.

Storage: Antibodies should be stored at -20°C. Aliquot to avoid freeze/thaw cycles.

Stability: Antibodies are stable for one year from purchase if stored frozen.

| | | | |
|------------------------------|-------------------------|----------------------------|---------------------------|
| Ordering Information: | Form Purified | Vial Size 100 ug | Catalog # X1035 |
|------------------------------|-------------------------|----------------------------|---------------------------|

For research use only. Not for use in human diagnostics or therapeutics.

Exalpha Biologicals, Inc., 86 Rosedale Rd. Watertown, MA 02472
Tel: 800.395.1137 or 617.924.3400, Fax: 866.924.5100 or 617.924.5100, Web: www.exalpha.com

References

1. Tymianski, M. et al. (1997) Cell Calcium 22: 111-120
2. Roberts, W. M. (1993) Nature 363: 74-76
3. Kline, D. et al. (1992) Dev. Bio. 149: 80-89
4. Choi, D.W. (1998)

For research use only. Not for use in human diagnostics or therapeutics.

Exalpha Biologicals, Inc., 86 Rosedale Rd. Watertown, MA 02472
Tel: 800.395.1137 or 617.924.3400, Fax: 866.924.5100 or 617.924.5100, Web: www.exalpha.com