

## Rabbit anti - $\alpha$ 1 B calcium channel Polyclonal

**Description:** The expression of multiple classes of voltage dependent calcium channels (VDCC's) allows neurons to tailor calcium signaling to functionally discrete cellular regions. Although N-Type VDCC's exist before birth which is consistent with a role in migration, most N-Type VDCC's subunit expression is postnatal and is important in the genesis of synaptic transmission in discrete hippocampal fields (1). The rabbit anti  $\alpha$  1 b calcium channel antibody recognizes a 220 kDa band by western blot.

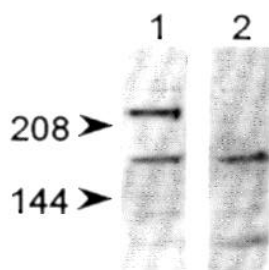
**Product:** rabbit anti  $\alpha$  1B calcium channel antibody

**Form:** rabbit polyclonal IgG purified

**Reactivity:** Rat

**Formulation:** 1mg/ml, provided as 0.2  $\mu$ m sterile filtered solution in phosphate buffered saline with 0.08% sodium azide.

**Applications:** 1- 10 ug/ml for western blot analysis, immunofluorescence, immunoprecipitation.



Legend: Exalpa's antibody against the alpha1B recognizes a band of ~220 kD on immunoblots of rat brain extracts (1) this band was blocked by the addition of specific peptide (2).

**Storage:** Antibodies should be stored at  $-20^{\circ}\text{C}$ . Aliquot to avoid freeze/thaw cycles.

**Stability:** Antibodies are stable for one year from purchase if stored frozen.

<b>Ordering Information:</b>	<b>Form</b> Purified	<b>Vial Size</b> 100 ug	<b>Catalog #</b> X1034
------------------------------	-------------------------	----------------------------	---------------------------

**References:**

1. Jones, O.T. et al. J.Neuroscience (1997) 17: 6152-6164

**For research use only. Not for use in human diagnostics or therapeutics.**