

Disabled (NT). Sheep Polyclonal Antibody , Mouse

Disabled homolog 1; DAB1

BACKGROUND

Disruption of the disabled-1 gene (Dab1) results in aberrant migration of neurons during development and disorganization of laminar structures throughout the brain. Dab1 is thought to function as an adaptor molecule in signal transduction processes. It contains a protein-protein interaction (PI) similar to the phosphotyrosine binding domain of the Shc oncoprotein, it is phosphorylated by the Src protein tyrosine kinase, and it binds to SH2 binding domains in a phosphotyrosine dependent manner. Disabled -1 acts downstream of reelin in a signalling pathway.

ORDERING INFORMATION

CATALOG NUMBER
U100P

SIZE
250 µg

FORM
Unconjugated

HOST/CLONE
Sheep

FORMULATION
Provided as 0.2mm sterile filtered solution in phosphate buffered saline with 0.08% sodium azide.

CONCENTRATION
250 ug/250 ml

ISOTYPE
IgG

APPLICATIONS
Western Blot

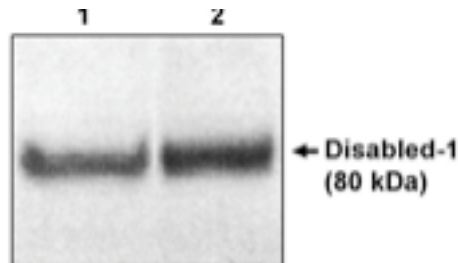
IMMUNOGEN

Recombinant protein corresponding to amino acids 1–179 of mouse disabled coupled to a GST fusion protein.

SPECIES REACTIVITY

Mouse

Legend: Western blot analysis using Disabled-1 (NT) (Cat. No. U100P) (1) and (CT) (Cat. No. U105P) (2) on mouse brain extracts.



For research use only. Not for use in human diagnostics or therapeutics.

POSITIVE CONTROL/TISSUE EXPRESSION

293 cells transfected with Dab-1 HA tag

COMMENTS

Immunoblotting at 1–5 µg/ml, Immunoprecipitation at 5–10µg/ml. Optimal concentration should be evaluated by serial dilutions.

SHIP CONDITIONS

Ship at ambient temperature, freeze upon arrival

STORAGE CUSTOMER

Product should be stored at -20°C. Aliquot to avoid freeze/thaw cycles

STABILITY

Products are stable for one year from purchase when stored properly

REFERENCES

1. Howell B.W. et.al (1997). EMBO Journal 1,121–132
2. Homayouni,R. et.al (1999) J. Neuroscience 19(17), 7505–7515

LAST MODIFIED 12/10/2008

For research use only. Not for use in human diagnostics or therapeutics.