



Exalpa Biologicals, Inc.

## Bi-Test™ IgG1 FITC - IgG1 PE Negative Control

**Product:** Mouse IgG Isotype controls for use with human cells.

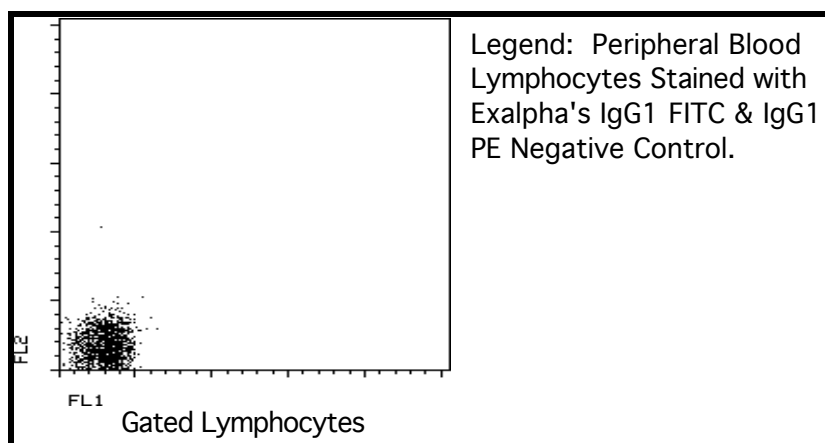
**Description:** Negative control for Immunofluorescence staining with FITC and PE of mouse monoclonal antibodies. Assessment of non-specific binding of mouse monoclonal antibodies to human cell surface antigens.

**Isotype:** Mouse IgG-1 kappa (FITC) and Mouse IgG-1 kappa (PE)

**Clones:** ZX3 (FITC) and ZX3 (PE)

**Use:** Consult the appropriate fact sheet to determine the amount of antibodies to be used as a control for PBMC or Whole Blood. PBMC: Generally, add 10  $\mu$ l of MAB/10<sup>6</sup> PBMC in 100  $\mu$ l PBS. Mix gently and incubate for 15 minutes at 2<sup>o</sup> to 8<sup>o</sup>C. Wash twice with PBS and analyze.

WHOLE BLOOD: Add 10  $\mu$ l of MAB/100  $\mu$ l of Whole Blood. Mix gently and incubate for 15 minutes at room temperature 20<sup>o</sup> C. Lyse the whole blood. Wash once with PBS and analyze. See instrument manufacturer's instructions for Lysed Whole Blood and Immunofluorescence analysis with a flow cytometer or microscope.



**Storage:** Antibodies are supplied in PBS, 0.08% sodium azide and 0.2% protein carrier at 12.5  $\mu$ g/ml for FITC and PE. Antibodies should be stored at 4-8<sup>o</sup>C. Monoclonal antibodies should not be frozen. Reagents are stable for the period shown on the vial label when stored properly.

<b>Ordering Information:</b>	<b>Form</b>	<b>Vial Size</b>	<b>Catalog #</b>
	Bi-Test™	100 Test	G1G1

**For research use only. Not for use in human diagnostics or therapeutics.**

Exalpa Biologicals, Inc., 86 Rosedale Rd. Watertown, MA 02472  
Tel: 800.395.1137 or 617.924.3400, Fax: 866.924.5100 or 617.924.5100, Web: [www.exalpa.com](http://www.exalpa.com)