



## Bi-Test™ IgG1 FITC - IgG2A\* PE Negative Control

**Product:** Mouse IgG Isotype control for use with human cells.

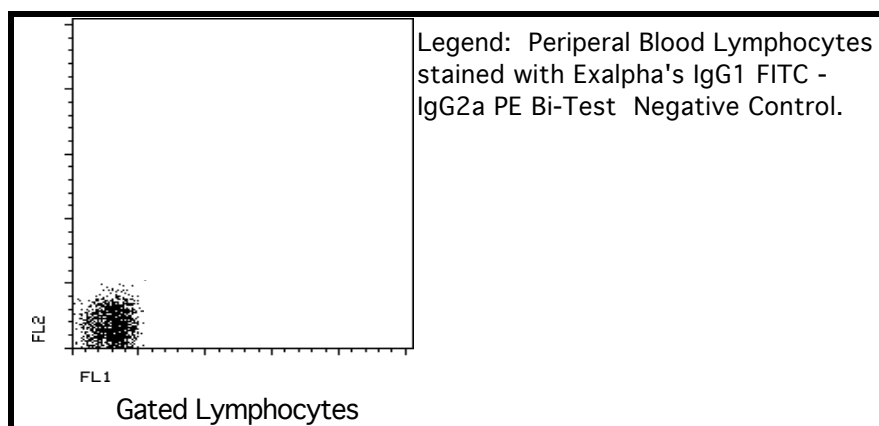
**Description:** Negative control for Immunofluorescence staining with FITC and PE of mouse monoclonal antibodies. Assessment of non-specific binding of mouse monoclonal antibodies to human cell surface antigens.

**Isotype:** Mouse IgG1 kappa (FITC) and Mouse IgG2a kappa (PE)

**Clones:** ZX3 (FITC) and ZX4 (PE)

**Use:** Consult the appropriate fact sheet to determine the amount of antibody to be used as a control for PBMC or Whole Blood. PBMC: Gently add 10  $\mu$ l of MAB/ $10^6$  PBMC in 100  $\mu$ l PBS. Mix gently and incubate for 15 minutes at 2 to 8 $^{\circ}$  C. Wash twice with PBS and analyze.

WHOLE BLOOD: Add 10  $\mu$ l of MAB/100  $\mu$ l of Whole Blood. Mix gently and incubate for 15 minutes at room temperature 20 $^{\circ}$ C. Lyse the whole blood. Wash once with PBS and analyze. See instrument manufacturer's instructions for Lysed Whole Blood and Immunofluorescence analysis with a flow cytometer or microscope.



**Storage:** Antibodies are supplied in PBS, 0.08% sodium azide and 0.2% protein carrier at 12.5  $\mu$ g/ml for FITC and PE. Antibodies should be stored at 4 - 8 $^{\circ}$ C. Monoclonal antibodies should not be frozen. Reagents are stable for the period shown on the vial label when stored properly.

Ordering Information:	Form	Vial Size	Catalog #
	Bi-Test™	100 Test	G12A

\*PLEASE NOTE: All Exalpa's IgG2a negative controls cross react with all Exalpa's IgG2b isotypes.

**For research use only. Not for use in human diagnostics or therapeutics.**

Exalpa Biologicals, Inc., 86 Rosedale Rd. Watertown, MA 02472  
Tel: 800.395.1137 or 617.924.3400, Fax: 866.924.5100 or 617.924.5100, Web:www.exalpa.com