

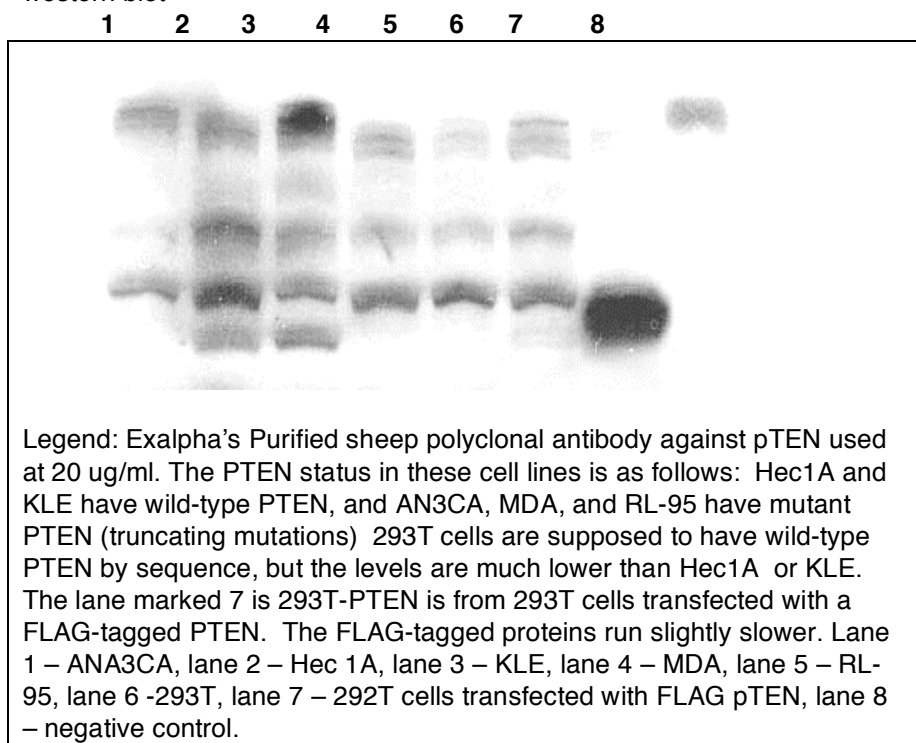
Sheep anti- human PTEN

Description: Loss of chromosome 10q is a frequently observed genetic defect in prostate cancer. Recently, the PTEN/MMAC1 tumor suppressor gene was identified and mapped to chromosome 10q23.3. PTEN is often found mutated in various cancers. The high frequency (60%) of PTEN mutations and deletions found in prostate cancer samples indicates a significant role of this tumor suppressor gene in the pathogenesis of prostate cancer. PTEN mRNA expression was clearly observed in all cell lines and xenografts without large homozygous deletions, showing that PTEN down-regulation is not an important mechanism of PTEN inactivation. The immunogen used was a GST-pTEN fusion protein a.a. seq. 188-403.

Product: sheep anti human PTEN

Formulation: Provided as 0.2 μ m sterile filtered solution in phosphate buffered saline with 0.08% sodium azide.

Applications: western blot



Form: purified IgG

Stability: Antibodies are stable for one year from purchase if stored frozen.

Storage: Antibodies should be stored at -20°C . Aliquot to avoid freeze/thaw cycles.

For research use only. Not for use in human diagnostics or therapeutics.

Ordering Information:

Form
Purified

Vial Size
250 μ g

Catalog #
D100P