



Exalpa Biologicals, Inc.

Rabbit anti human Endothelial Cell Differentiation Gene 2 C terminal (EDG 2 CT)

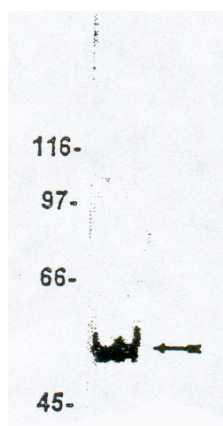
Specificity: Recognizes an epitope on human EDG 2 between a.a. 328-344,

Host: rabbit

Concentration: 1 mg/ml

Formulation: Provided as a 0.2 μ m sterile-filtered solution in PBS with 0.08% sodium azide.

Applications: Western blots at 1 ug/ml. Immuno-blot shows rat brain microsomal preparation which was probed with anti EDG 2 at 1 ug/ml. Proteins were visualized using a goat anti rabbit conjugated to HRP and a chemiluminescence detection system. EDG 2 indicated at 50 kDa.



Immunogen: KLH conjugated synthetic peptide corresponding to the a.a. 328-344 of human EDG 2.

Reactivity: Binds human and rat EDG 2

Antibody Source: Rabbit serum

Antibody Purity: > 95 % by SDS PAGE

Storage: Antibodies should be stored at -20°C . Aliquot to avoid freeze/thaw cycles.

Ordering Information:	Form	Vial Size	Catalog #
	Pure	100 μ g	C174P

References:

1. Fukushima, N., et al., Proc. Natl.Acad. Sci. 95: 6151,1998.
2. Goetzl, E., et al.,J. of Immun.162:2049, 1992.

For research use only. Not for use in human diagnostics or therapeutics.

Exalpa Biologicals, Inc., 2 Shaker Rd, #B101, Shirley, MA 01464
Tel: 800.395.1137 or 978.425.1370, Fax: 866.924.5100 or 978.425.1376, Web: www.exalpa.com