



## Bi-Test™ CD19 FITC- CD2 PE

**Product:** Anti-Human CD19 FITC B Lymphocytes Monoclonal Antibody and Anti-human CD2 PE T and NK subset Lymphocytes Cell Monoclonal Antibody.

**Description:** Identification of CD19 (FITC) Human B cells associated approximately 10% of peripheral blood lymphocytes, 95,000 M.W. surface antigen. Identification of human T cells and subset of NK cells associated with the receptor for sheep erythrocytes rosettes expressing the 45-50,000 M.W. surface antigen.

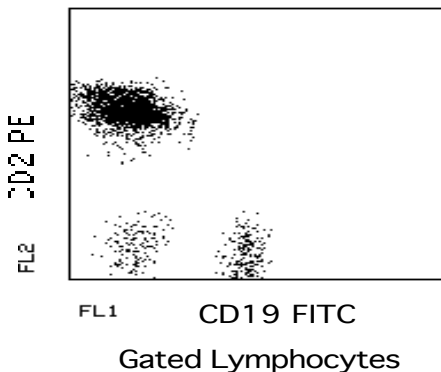
**Isotype:** Mouse IgG-1 kappa (FITC) and Mouse IgG-2a kappa

**Clones:** 1G9 (CD19 FITC) and T6.3 (CD2 PE)

**Applications:** Monitoring of T cells subsets in peripheral blood; Characterization of subtypes of T cell leukemia's and lymphomas; Monitoring of B cells in peripheral; Analysis of NK subsets; Analysis of B cell subsets; Study of T cell activation; Study of B cell neoplasms; Study of B cell subsets.

**Use:** PBMC: Add 10  $\mu$ l of MAB/ $10^6$  PBMC in 100  $\mu$ l PBS. Mix gently and incubate for 15 minutes at 20° to 8° C. Wash twice with PBS and analyze.

WHOLE BLOOD: Add 10  $\mu$ l of MAB/100  $\mu$ l of whole blood. Mix gently and incubate for 15 minutes at room temperature 20° C. Lyse the whole blood. Wash once with PBS and analyze. See instrument manufacturer's instructions for Lysed Whole Blood and Immunofluorescence analysis with a flow cytometer or microscope.



Legend: Peripheral Blood Lymphocytes Stained with Exalpa's Bi-Test CD19 FITC-CD2 PE Two Color Staining Kit.

**Storage:** Antibodies are supplied in PBS, 0.08% sodium azide and 0.2% protein carrier for FITC and PE. Antibodies should be stored at 4-8° C. Monoclonal antibodies should not be frozen. Reagents are stable for the period shown on the vial label when stored properly.

Ordering Information:	Form	Vial Size	Catalog #
	Bi-Test™	50 Test	B192s
	Bi-Test™	100 Test	B192

**For research use only. Not for use in human diagnostics or therapeutics.**

## REFERENCES:

1. An Improved Rosetting Assay for Detection of Human T Lymphocytes. Kaplan M.E., Clark C., J. Immunol. Methods 1974, 5,131
2. Structural and functional characterization of the CD2 immunoadhesion domain. Evidence for inclusion of CD2 in an alpha-beta protein folding class. Recny M.A., Neidhardt E.A., Sayre P.H., Ciardelli T.L., Reinherz E.L., J. Biol. Chem. 1990 May 2;265(15):8541-9
3. Partial deletions of the cytoplasm domain of CD2 result in a partial defect in signal transduction. Bierer B.E., Bogart R.E., Burakoff S.J., J. Immunol. 1990 Feb. :144(3):785
4. Functional CD2 mutants unable to bind to, or be stimulated by, LFA-3. Wolff H.L., Burakoff S.J., Bierer B.E., J. Immunol. 1990 Feb. 1;144(4):1215-20
5. Association of CD2 and CD45 on human T lymphocytes. Schraven B., Samstag Y., Altevogt P., Meuer S.C., Nature 1990 May ;345(6270):71-4
6. Functional Properties of CD19+ B Lymphocytes Positively Selected from Buffy Coats by Immunomagnetic Separation. Funderud S., Erikstien B., Asheim H.C., Nustad K., Stokke T., Blomhoff H.K., Holte H, Smeland E.B., Eur. J. Immunol. 1990 Ja;20(1):201-6
7. Thymic B Cells from Myasthenia Gravis Patients are Activated B Cells. Phenotypic and Functional Analysis. Leprince C., Cohen-Kaminsky S., Berrih-Aknin S., Vernet-Der Garabedian B., Treton D., Galanaud P., Richard Y., J. Immunol. 1990 Oct., 145(7):2115-22
8. Prognostic Significance of CD34 Expression in Childhood B Precursor Acute Lymphocytic Leukemia: A Pediatric Oncology Group Study. Borowitz MJ, Shuster JJ, Civin CI, Carrol AJ, Look AT, Behm FG, Land VJ, Pullen DJ, Crist WM, J. Clin. Onol. 1990 Au;8(8):1389-98
9. Biphenotypic Acute Leukemia in Adults. Sulak LE, Clare CN, Morale BA, Hansen KL, Montiel MM, Am. J. Clin. Path. 1990 Ju;94(1):54-8
10. Intersection of the Complement and Immune Systems: A Signal Transduction Complex of the B Lymphocyte Containing Complement Receptor type 2 and CD19. Matsumoto AK, Kopicky-Burd J., Carter Rh, Tuveson DA, Tedder TF, Fearon, DT, J. Exp. Med. 1991 Jan. 173(1):55-64

**For research use only. Not for use in human diagnostics or therapeutics.**

Exalpa Biologicals, Inc., 86 Rosedale Rd. Watertown, MA 02472  
Tel: 800.395.1137 or 617.924.3400, Fax: 866.924.5100 or 617.924.5100, Web:www.exalpa.com