



## Bi-Test™ CD8 FITC - CD4 PE

**Product:** Anti-human CD4 PE Helper/Inducer T cell Monoclonal I Antibody and Anti-human CD8 FITC T & NK Lymphocytes Monoclonal Antibody.

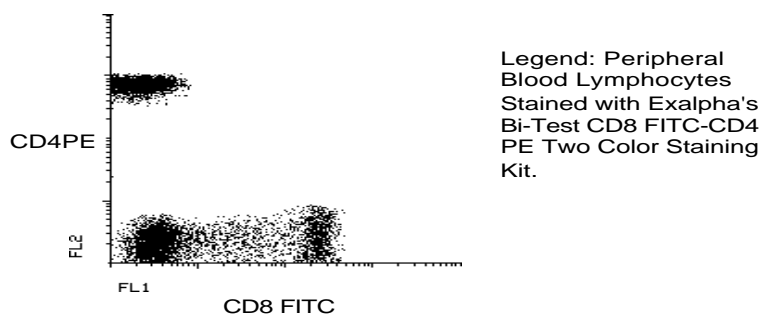
**Description:** Identification of CD8 on human suppressor/cytotoxic T cells expressing the 32 and 43,000 M.W. surface antigens. Identification of CD4 on human helper/inducer T cells expressing the 60,000 M.W. surface antigen (HLA class II reactive). CD4 is present in low density on monocytes.

**Isotypes:** Mouse IgG-1 kappa (FITC) and Mouse IgG-1 kappa (PE)

**Clones:** 17D8 (CD8 FITC) and 7E14 (CD4 PE)

**Applications:** Monitoring of T cells subsets in peripheral blood; Analysis of T cell subsets involved in helper/inducer functions; Characterization of subtypes of T cell leukemia's and lymphomas; Studies of AIDS/HIV virus infection; Analysis of NK subsets; Study of cell mediated cytotoxicity.

**Use:** PBMC: Add 10  $\mu$ l of MAB/ $10^6$  PBMC in 100  $\mu$ l PBS. Mix gently and incubate for 15 minutes at 20° to 8°C. Wash twice with PBS and analyze or fix with 0.5% v/v of paraformaldehyde in PBS and analyze. WHOLE BLOOD: Add 10  $\mu$ l of MAB/100  $\mu$ l of whole blood. Mix gently and incubate for 15 minutes at room temperature 20°C. Lyse the whole blood. Wash once with PBS and analyze or fix with 0.5% v/v of paraformaldehyde in PBS and analyze. See instrument manufacturer's instructions for Lysed Whole Blood and Immunofluorescence analysis with a flow cytometer or microscope.



**Storage:** Antibodies are supplied in PBS, 0.08% sodium azide and 0.2% protein carrier for FITC and PE. Antibodies should be stored at 4-8°C. Monoclonal antibodies should not be frozen. Reagents are stable for the period shown on the vial label when stored properly.

Ordering Information:	Form	Vial Size	Catalog #
	Bi-Test™	100 Test	B084
	Bi-Test™	50 Test	B084S

**For research use only. Not for use in human diagnostics or therapeutics.**

## REFERENCES:

1. Thymus Dependent Membrane Antigens in Man: Inhibition of Cell-Mediated Lympholysis by Monoclonal Antibodies to the TH-2 Antigen. Evans, R.L., Wall, D.W., Platsoucas, C.D., Siegal, F.P., Fikrig, S.M., Testa, C.M, and Good, R.A. Proc. Nat. Acad. Sci. 78,544,1981.
2. Novel Immunoregulatory Functions of Phenotypically Distinct Subpopulations of CD4+ cells in the Human Neonate. Clement, L.T., Vink, P.E., Bradley, G.E. J. Immunology 145(1):102-8,1990 .
3. Antigen Presentation by the CD4 Positive Monocyte Subset. Szabo, G., Miller, C.L., Kodys, K., J. Leukoc. Biol. 47(2): 111-20,1990.
4. Human Immunodeficiency Virus Infection is Efficiently Mediated by a Glycolipid-Anchored form of CD4. Diamond, D.C., Finberg, R., Chaudhuri, S., Sleckman, B.P., Burakoff, S.J., Proc. Natl. Acad. Sci. 87(13):5001-5,1990.
5. Development Regulation of the Intrathymic T cell Precursor Population. Adkins, B., J. Immunol. 146(5):1387-93,1991.
6. Induction of CD4 and Susceptibility to HIV-1 Infection in Human CD8+ T Lymphocytes by Human Herpesvirus 6. Lusso, P., De Maria, A., Malnati, M., Lori, F., DeRocco, S.E., Baseler, M., Gallo, R.C., Nat. 349(6309):533-5,1991.
7. Evolutionary Conservation of Surface Molecules that Distinguish T Lymphocyte Helper/Inducer and T Cytotoxic/Suppressor Subpopulations in Mouse and Man. Ledbetter, J.A., Evans, R.L., Lipinski, M., Cunningham-Rundles, C., Good, R.A., and Herzenberg, L.A., J. Exp. Med. 153,310, 1981.
8. Circulating Antigen-Specific Suppressor T Cells in a Healthy Woman: Mechanism of Action and Isolation with a Monoclonal Antibody. Engleman, E.G., Benike, C.J., and Evans, R.L., Clin. Res. 29, 365a 1981.
9. Induction of Immunoglobulin Secreting Cells in the Allogeneic Mixed Leukocyte Reaction: Regulation by Helper and Suppressor Lymphocyte Subsets in Man. Kotzin, B.L., Benike, C.J. and Engleman, E.G., J. Imm. 127,931,1981.
10. CD4 and CD8 molecules can physically associate with the same T-cell receptor. Gallagher, P.F., Fazekas de St. Groth, B., Miller, J.F.A.P., Proc. Nat. Acad. Sci. 1989,86:10044.

**For research use only. Not for use in human diagnostics or therapeutics.**

Exalpha Biologicals, Inc., 86 Rosedale Rd. Watertown, MA 02472  
Tel: 800.395.1137 or 617.924.3400, Fax: 866.924.5100 or 617.924.5100, Web:www.exalpha.com