

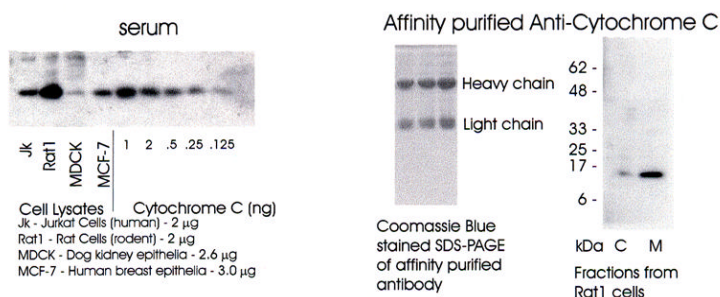
Sheep Anti - Cytochrome C

Product: Sheep anti-cytochrome C polyclonal antibody.

Description: Cytochrome C is an electron transport protein from mitochondria. It is released as in early committed event in apoptosis.

Applications: Western Blot 1:5,000, shows a MW of 14.4kDa. May be used in immunofluorescence applications with human and rat cells; Immunoprecipitation - Empirical.

Western Blotting



Presentation: 100 µg affinity purified IgG or 250ul of whole serum.

Formulation: Provided as 0.2µm sterile filtered solution in phosphate buffered saline with 0.08% sodium azide.

Reactivity: Human, rat, rabbit and dog.

Storage: Antibodies should be stored at -20°C. Aliquot to avoid freeze/thaw cycles.

Stability: Antibodies are stable for one year from purchase if stored frozen.

Ordering Information:	Form	Vial Size	Catalog #
	Whole sera	250 µl	A195P
	Affinity Purified	100µg	A200P

For research use only. Not for use in human diagnostics or therapeutics.