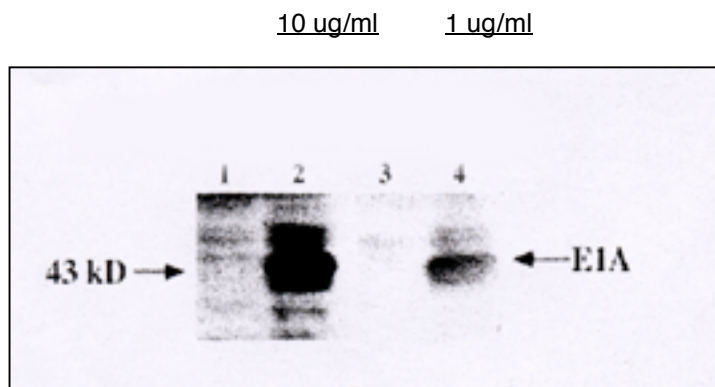


Sheep Anti Rat Adenovirus E1A

Product: Sheep -anti-adenovirus early region 1A (E1A) antibody.

Description: The immunogen for the anti-E1A was a GST-E1A fusion protein recognizing a 43kD protein. E1A gene encodes potent onco-proteins that modify the normal transcriptional growth regulation of key cellular genes and thus alter cell cycle control.

Applications: Western Blot suggested dilution 1- 10 ug /ml



Legend: E1A western blot. Each lane contains 50 ug total cellular protein separated on a 12% SDS PAGE gel. Lanes 1 and 3, HCT116 cell lysate – negative control: lanes 2 and 4, 293 cell lysate, positive control.

Positive Control: 293 cells are human embryonic kidney cells that have been transformed with the adenovirus genes E1A and E1B, which are required for adenovirus propagation. This cell line can be used as a positive control for this antibody.

Presentation: 100 µg Ig purified

Formulation: Provided as 0.2µm sterile filtered solution in phosphate buffered saline with 0.08% sodium azide.

Reactivity: Rat

Storage: Antibodies should be stored at –20°C. Aliquot to avoid freeze/thaw cycles.

Stability: Antibodies are stable for one year from purchase if stored frozen.

Ordering Information:	Form	Vial Size	Catalog #
	Purified	100 µg	A100P

For research use only. Not for use in human diagnostics or therapeutics.

Exalpha Biologicals, Inc., 2 Shaker Rd, #B101, Shirley, MA 01464
 Tel: 800.395.1137 or 978.425.1370, Fax: 866.924.5100 or 978.425.1376, Web: www.exalpha.com