



Bi-Test™ IgG2a FITC* - IgG1 PE Negative Control

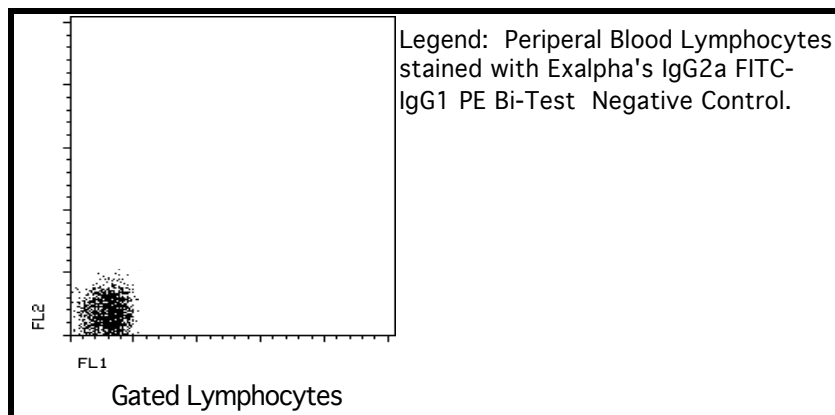
Product: Mouse IgG Isotype control for use with human cells.

Description: Negative control for Immunofluorescence staining with FITC and PE of mouse monoclonal antibodies. Assessment of non-specific binding of mouse monoclonal antibodies to human cell surface antigens.

Isotype: Mouse IgG-2a kappa (FITC) and Mouse IgG-1 kappa (PE)

Clones: ZX4 (FITC) and ZX3 (PE).

Use: Consult the appropriate fact sheet to determine the amount of antibody to be used as a control for PBMC or Whole Blood. PBMC: Generally, add 10 µl of MAB/10⁶ PBMC in 100 µl PBS. Mix gently and incubate for 15 minutes at 2^o to 8^o C. Wash twice with PBS and analyze. WHOLE BLOOD: Add 10 µl of MAB/100 µl of Whole Blood. Mix gently and incubate for 15 minutes at room temperature 20^oC. Lyse the whole blood. Wash once with PBS and analyze. See instrument manufacturer's instructions for Lysed Whole Blood and Immunofluorescence analysis with a flow cytometer or microscope.



Storage: Antibodies are supplied in PBS, 0.08% sodium azide and 0.2% protein carrier at 12.5 µg/ml for FITC and PE. Antibodies should be stored at 4 - 8^oC. Monoclonal antibodies should not be frozen. Reagents are stable for the period shown on the vial label when stored properly.

Ordering Information:	Form	Vial Size	Catalog #
	Bi-Test™	50 Test	2AG1s
	Bi-Test™	100 Test	2AG1

*PLEASE NOTE: All Exalpa's IgG2a negative controls cross react with all Exalpa's IgG2b isotypes.

For research use only. Not for use in human diagnostics or therapeutics.

Exalpa Biologicals, Inc., 86 Rosedale Rd. Watertown, MA 02472
Tel: 800.395.1137 or 617.924.3400, Fax: 866.924.5100 or 617.924.5100, Web:www.exalpa.com