

Bi-Test™ IgG2a* FITC - IgG2a PE Negative Control

Product: Mouse IgG Isotype control for use with human cells.

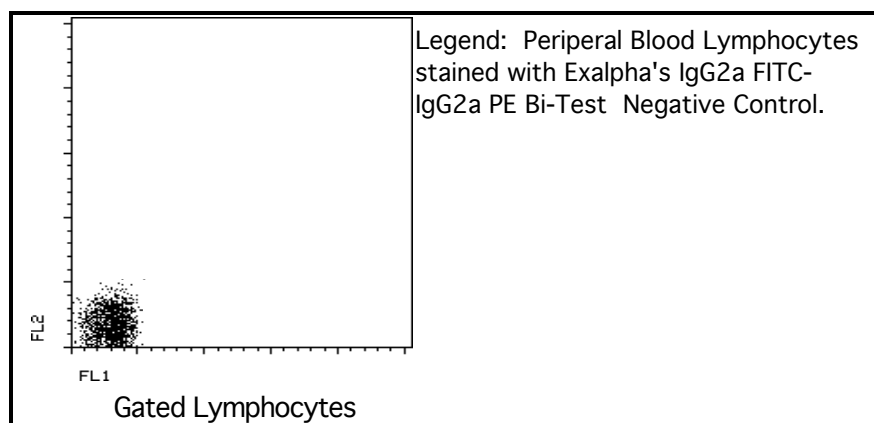
Description: Negative control for Immunofluorescence staining with FITC and PE of mouse monoclonal antibodies. Assessment of non-specific binding of mouse monoclonal antibodies to human cell surface antigens.

Isotype: Mouse IgG-2a kappa (FITC) and Mouse IgG-2a kappa (PE)

Clones: ZX4 (FITC) and ZX4 (PE).

Use: Consult the appropriate fact sheet to determine the amount of antibody to be used as a control for PBMC or Whole Blood. PBMC: Generally, add 10 µl of MAB/10⁶ PBMC in 100 µl PBS. Mix gently and incubate for 15 minutes at 2^o to 8^oC. Wash twice with PBS and analyze.

WHOLE BLOOD: Add 10 µl of MAB/100 µl of Whole Blood. Mix gently and incubate for 15 minutes at room temperature 20^o C. Lyse the whole blood. Wash once with PBS and analyze. See instrument manufacturer's instructions for Lysed Whole Blood and Immunofluorescence analysis with a flow cytometer or microscope.



Storage: Antibodies are supplied in PBS, 0.08% sodium azide and 0.2% protein carrier at 12.5 µg/ml for FITC and PE. Antibodies should be stored at 4 - 8^oC. Monoclonal antibodies should not be frozen. Reagents are stable for the period shown on the vial label when stored properly.

Ordering Information:	Form	Vial Size	Catalog #
	Bi-Test™	50 Test	2A2As
	Bi-Test™	100 Test	2A2A

*PLEASE NOTE: All Exalpa's IgG2a negative controls cross react with all Exalpa's IgG2b isotypes.

For research use only. Not for use in human diagnostics or therapeutics.