



CD11a

Product: Anti human LFA-1 alpha Monoclonal Antibody.

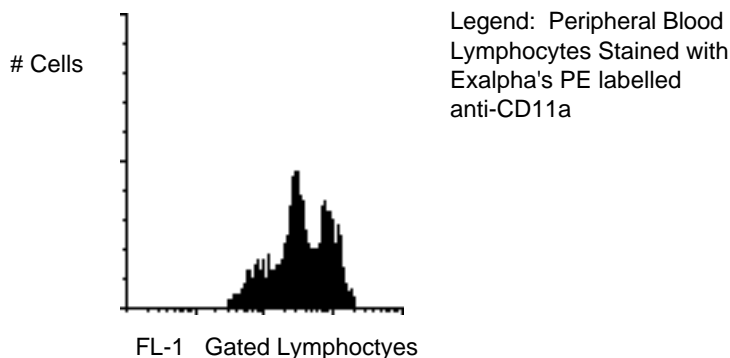
Description: CD11a, Leukocyte Function Antigen-1 (LFA-1) complex is a heterodimeric glycoprotein consisting of two non-covalently linked chains, a 180 kDa alpha chain and a 95 kDa beta chain. It is a member of the integrin supergene family of adhesion molecules, and is on virtually all peripheral blood leukocytes. The molecule binds to ICAM-1, 2 and 3 and mediates cell-cell adhesion. This antibody blocks cell-cell adhesion and adhesion mediated events such as cell mediated cytotoxicity.

Isotype: Mouse IgG-2a kappa.

Clone: OFYS

Applications: Characterization of LFA-1 immunodeficiency; Monitoring of subsets in peripheral blood; Graft-versus-host disease; Analysis of CTL-mediated cytotoxicity; Studies of transplantation rejection; Functional studies of cell adhesion molecules.

Use: PBMC: Add 10 μ l of MAB/10⁶ PBMC in 100 μ l PBS. Mix gently and incubate for 15 minutes at 2^o to 8^oC. Wash twice with PBS and analyze or fix with 0.5% v/v of paraformaldehyde in PBS and analyze. WHOLE BLOOD: Add 10 μ l of MAB/100 μ l of whole blood. Mix gently and incubate for 15 minutes at room temperature (20^oC). Lyse the whole blood. Wash once with PBS and analyze or fix with 0.5% v/v of paraformaldehyde in PBS and analyze. See instrument manufacturer's instructions for Lysed Whole Blood and Immunofluorescence analysis with a flow cytometer or microscope.



Storage: Unconjugated antibodies supplied as a 1 mg/ml solution PBS and 0.08% sodium azide and should be stored at -20^oC. Conjugated antibodies are supplied in PBS, 0.08% sodium azide and 0.2% protein carrier and should be stored at 4-8^oC. Conjugated antibodies should not be frozen. Reagents are stable for the period shown on the vial label when stored properly.

Ordering Information:	Form	Vial Size	Catalog #
	Pure*	100 μ g	11A1
	FITC	100 Test	11A2
	Biotin	100 Test	11A3
	PE	100 Test	11A4

For research use only. Not for use in human diagnostics or therapeutics.

* Pure form tested for Exalpha for cross-reactivity with *Macaca* species monkey.

REFERENCES:

1. Protein kinase C-mediated regulation of the expression of CD14 and CD11/CD18 in U937 cells. Pedrinaci S; Ruiz-Cabello F; Gomez O; Collado A; Garr Int J Cancer 1990 Feb 1;45(2):294-8
2. Fc gamma and CD11/CD18 receptor expression on normal density and low density human eosinophils. Hartnell A; Moqbel R; Walsh GM; Bradley B; Kay AB Immunology 1990 Fe;69(2):264-70
3. Leukocyte adhesion molecules deficiency: its structural basis, pathophysiology and implications for modulating the inflammatory response. Arnaout MA Immunol Rev 1990 Ap;114 p145-80
4. Participation of CD11a-c/CD18 and RGD-recognizing adhesion molecules in the binding of LGL to fibroblasts. Evidence for the role of CD11a in the fibroblast-mediated inactivation of NK cells. Scand J Immunol 1990 Au;32(2):137-47
5. Evidence that anti-LFA-1 in vivo improves engraftment and survival after allogeneic bone marrow transplantation. van Dijken PJ; Ghayur T; Mauch P; Down J; Burakoff SJ; Ferrara JL Transplantation 1990 Ma;49(5):882-6
6. Leukocyte-cell adhesion: a molecular process fundamental in leukocyte physiology. Patarroyo M; Prieto J; Rincon J; Timonen T; Lundberg C; Lindbom L; Asjo B; Gahmberg CG Immunol Rev 1990 Ap;114 p67-108
7. Leukocyte Adhesion Deficiency: an inherited defect in Mac-1, LFA-1, and p150,95 glycoproteins Anderson DC and Springer TA, Ann Rev Med 1987;38:175

For research use only. Not for use in human diagnostics or therapeutics.

Exalpha Biologicals, Inc., 86 Rosedale Rd. Watertown, MA 02472
Tel: 800.395.1137 or 617.924.3400, Fax: 866.924.5100 or 617.924.5100, Web: www.exalpha.com