

## IgG1 Platelet PE Negative Control

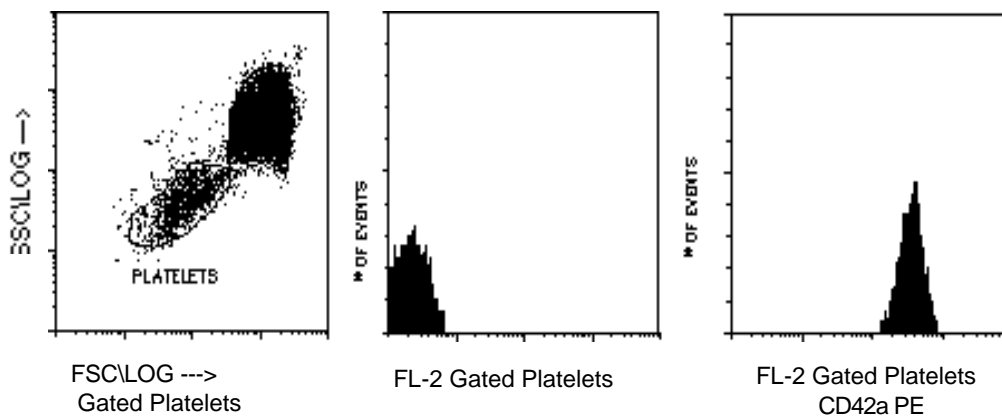
**Product:** Mouse IgG1 Isotype Negative Control for use with human platelets.

**Description:** Negative control for Immunofluorescence staining with PE of mouse monoclonal antibodies. Assessment of non-specific binding of mouse monoclonal antibodies to human platelets.

**Isotypes:** Mouse IgG-1 kappa

**Clones:** ZX3

**Use:** Collect blood aseptically by venipuncture into an ACD or EDTA blood collection tube. Important: Within 5 minutes of blood collection, fix blood sample by placing 100  $\mu$ l of blood in test tube containing 1 ml of cold (4°C) 1X PBS with 1% paraformaldehyde. Mix by vortexing. Centrifuge the fixed blood at 1200 x g for 5 minutes at room temperature (RT) 20°C. Aspirate the supernatant, leave pellet. Prior to staining, wash the fixed blood pellet 2X with 1 ml 1X PBS + 0.1% Azide at RT. Centrifuge the fixed blood at 1200 x g for 5 minutes at room temperature (RT) 20°C. Aspirate the supernatant, leave pellet. Resuspend the pellet in 1 ml of 1X PBS at RT. To a clean labeled test tube add 10  $\mu$ l of Exalpa monoclonal antibody. Carefully add 50  $\mu$ l of the fixed blood suspension to the bottom of the test tube. Vortex and incubate at room temperature for at least 15 minutes and analyzed within 3 hours. Please note: Using this procedure will yield twenty samples for platelet analysis. Select logarithmic (Log) amplification for both Forward (FSC) and Side (SSC) scatters, while collecting data for platelets. See instrument manufacturer's instructions for Immunofluorescence analysis with a flow cytometer or microscope



Legend: Peripheral Blood, gated on Platelets and Stained with Exalpa's PE Conjugated anti-CD42a. Note: When staining Platelets with Exalpa's CD42a PE, it is essential to use Exalpa's PE conjugated Isotype Negative Control.

**Storage:** Antibodies are supplied in PBS, 0.08% sodium azide and 0.2% protein carrier at 12.5 ug/m of PE Mab. Antibodies should be stored at 4 - 8°C. Monoclonal antibodies should not be frozen. Reagents are stable for the period shown on the vial label when stored properly.

**For research use only. Not for use in human diagnostics or therapeutics.**

<b>Ordering Information:</b>	<b>Form</b>	<b>Vial Size</b>	<b>Catalog #</b>
	PE	100 Test	0PPE

**WARNING:** Reagents containing sodium azide under acid conditions yields hydrazoic acid, an extremely toxic compound. Azide compound should be discarded with proper caution. There are no warranties, expressed or implied, which extend beyond the description on the label of the product. Exalpha is not liable for property damage, personal injury or economic loss caused by the product. Nothing disclosed herein is to be construed as a recommendation to use Exalpha's products in violation of any patents. Exalpha cannot be responsible for patent infringement or other violations that may occur by the use of its products.