

Bi-Test™ CD8 FITC-CD56 PE

Product: Anti-human T and NK Lymphocytes Monoclonal Antibody. Anti-human NK Cell Monoclonal Antibody.

Description: CD8 Identification of human T cells suppressor/cytotoxic expressing the 32 and 43,000 M.W. surface antigen CD56, M.W. 150,000, is expressed on approximately 10-25% of human peripheral blood lymphocytes. CD56 (NKH-1) is expressed on human peripheral blood natural killer cells, representing a pan NK-cell antigen. Expressed on non-MHC-restricted cytotoxic T cells.

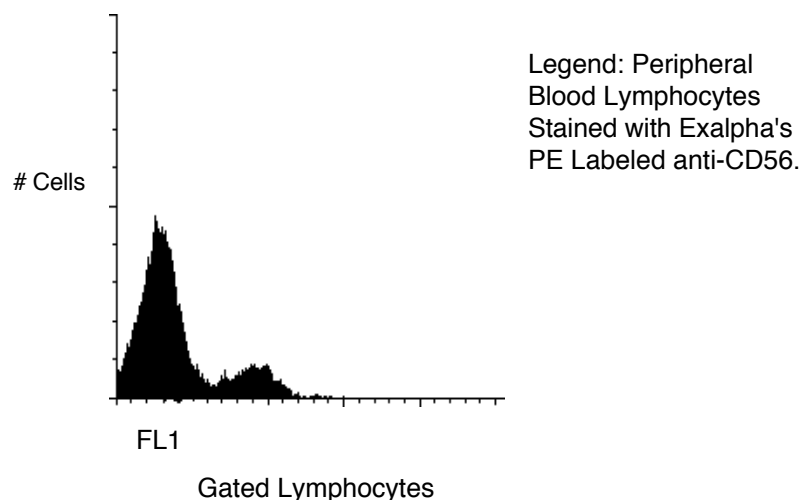
Isotype: CD8: Mouse IgG1 kappa and CD56: Mouse IgG2b kappa.

Clone: CD8: 17D8 (FITC) and CD56 C5.9 (PE)

Applications: Monitoring of T cells subsets in peripheral blood; Analysis of NK cell subsets; Study of cell mediated cytotoxicity; Study of resting and activated NK cells; Study of non-MHC-restricted cytoxic T cells; Study of T cell differentiation in early thymocytes.

Use: PBMC: Add 10 μ l of MAB/ 10^6 PBMC in 100 μ l PBS. Mix gently and incubate for 15 minutes at 2^o to 8^o C. Wash twice with PBS and analyze or fix with 0.5% v/v of paraformaldehyde in PBS and analyze.

WHOLE BLOOD: Add 10 μ l of MAB/100 μ l of whole blood. Mix gently and incubate for 15 minutes at room temperature 20^oC. Lyse the whole blood. Wash once with PBS and analyze or fix with 0.5% v/v of paraformaldehyde in PBS and analyze. See instrument manufacturer's instructions for Lysed Whole Blood and Immunofluorescence analysis with a flow cytometer or microscope.



Storage: Antibodies are supplied in PBS, 0.08% sodium azide and 0.2% protein carrier for Pure, FITC, Biotin, APC and PE. Antibodies should be stored at 4-8^oC. Monoclonal

For research use only. Not for use in human diagnostics or therapeutics.

Exalpa Biologicals, Inc., 2 Shaker Rd, #B101, Shirley, MA 01464
Tel: 800.395.1137 or 978.425.1370, Fax: 866.924.5100 or 978.425.1376, Web: www.exalpa.com

antibodies should not be frozen. Reagents are stable for the period shown on the vial label when stored properly.

Ordering Information:	Form	Vial Size	Catalog #
	Bi-Test™	50 Test	0856s
	Bi-Test™	100 Test	0856

For research use only. Not for use in human diagnostics or therapeutics.

Exalpha Biologicals, Inc., 2 Shaker Rd, #B101, Shirley, MA 01464
Tel: 800.395.1137 or 978.425.1370, Fax: 866.924.5100 or 978.425.1376, Web: www.exalpha.com

REFERENCES:

1. Evolutionary Conservation of Surface Molecules that Distinguish T Lymphocyte Helper/Inducer and T Cytotoxic/Suppressor Subpopulations in Mouse and Man. Ledbetter, J.A., Evans, R.L., Lipinski, M., Cunningham-Rundles, C., Good, R.A. and Herzenberg, L.A., J. Exp. Med. 153,310, 1981.
2. Circulating Antigen-Specific Suppressor T Cells in a Healthy Woman: Mechanism of Action and Isolation with a Monoclonal Antibody. Engleman, E.G., Benike, C.J., and Evans, R.L., Clin. Res. 29, 365a 1981.
3. Induction of Immunoglobulin Secreting Cells in the Allogeneic Mixed Leukocyte Reaction: Regulation by Helper and Suppressor Lymphocyte Subsets in Man. Kotzin, B.L., Benike, C.J. and Engleman, E.G., J. Imm. 127,931, 1981.
4. CD4 and CD8 molecules can physically associate with the same T-cell receptor. Gallagher, P.F., Fazekas de St. Groth, B., Miller, J.F.A.P., Proc. Nat. Acad. Sci. 1989,86:10044.
5. Immunofluorescence Measurement in a Flow Cytometer using Low-Power Helium Neon Laser Excitation. Shapiro, H.M, Glazer, A.N., Christenson, L., Williams, J.M., and Strom, T. B. Cytometry 4,276, 1983.
6. Comparison of Helium Neon and Dye lasers for Excitation of Allophycocyanin. Loken, M.R., Kiej, J.F. and Kelly, K., A. Cytometry 8, 96, 1987.
7. Generation of Monoclonal Antibodies to a Human Natural Killer Clone. Characterization of Two Natural Killer-Associated Antigens, NKH1 and NKH2, Expressed on Subset of Large Granular Lymphocytes. Hercend, T., Griffin, J.D., Benussan, A., Schmidt, R.E., Edson, M.A., Brennen, A., Murray, C., Daley, J.F., Schlossman, S.F., and Ritz, J.. J. Clin. Invest. 1985 75:932.
8. The relationship of CD16 (Leu-11) and Leu-19 (NKH-1) Antigen Expression on Human Peripheral Blood Nk Cells and Cytotoxic T Lymphocytes. Lanier, L.L., Le, A.M., Civin, C.I., Loken, M.R., and Phillips, J.H., J. Immunol. 1986 136,4480.
9. A subset of natural killer cells in peripheral blood displays a mature T cell phenotype. Schmidt RE, Murray C, Daley JF, Schlossman SF, and Ritz J, J Ex Med 1986 164: 351-356
10. Phenotypic and functional deficiency of natural killer cells in patients with chronic fatigue syndrome. Caligiuri M, Murray C, Buchwald D, Levine H, Cheney P, Peterson D, Komaroff AL, and Ritz J, J Immunol 1987 139:3306-3319
11. Hercend T., and Schmidt, R.E., Immunol. Today 9,291,1988.

For research use only. Not for use in human diagnostics or therapeutics.

Exalpha Biologicals, Inc., 2 Shaker Rd, #B101, Shirley, MA 01464
Tel: 800.395.1137 or 978.425.1370, Fax: 866.924.5100 or 978.425.1376, Web: www.exalpha.com