



CD56

Product: Anti-human NK Cell Monoclonal Antibody.

Description: CD56, M.W. 150,000, is expressed on approximately 10-25% of human peripheral blood lymphocytes. CD56 (NKH-1) is expressed on human peripheral blood natural killer cells, representing a pan NK-cell antigen. Expressed on non-MHC-restricted cytotoxic T cells.

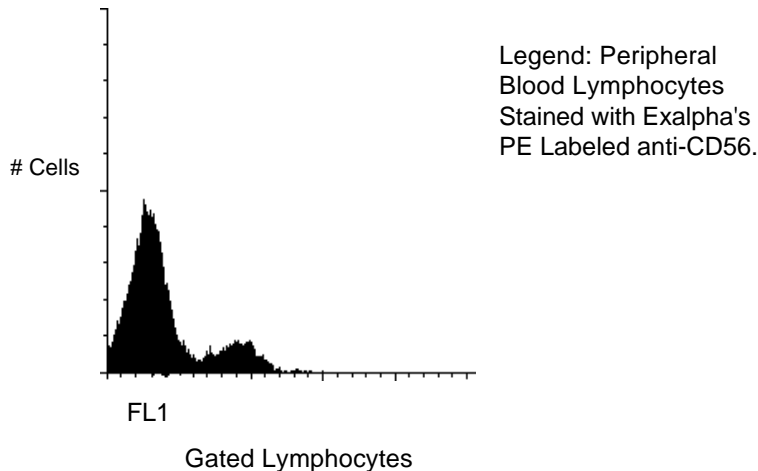
Isotype: Mouse IgG-2b kappa.

Clone: C5.9

Applications: Study of resting and activated NK cells; Study of non-MHC-restricted cytotoxic T cells; Study of T cell differentiation in early thymocytes.

Use: PBMC: Add 10 μ l of MAB/ 10^6 PBMC in 100 μ l PBS. Mix gently and incubate for 15 minutes at 2^o to 8^o C. Wash twice with PBS and analyze or fix with 0.5% v/v of paraformaldehyde in PBS and analyze.

WHOLE BLOOD: Add 10 μ l of MAB/100 μ l of whole blood. Mix gently and incubate for 15 minutes at room temperature 20^oC. Lyse the whole blood. Wash once with PBS and analyze or fix with 0.5% v/v of paraformaldehyde in PBS and analyze. See instrument manufacturer's instructions for Lysed Whole Blood and Immunofluorescence analysis with a flow cytometer or microscope.



Storage: Conjugated antibodies are supplied in PBS, 0.08% sodium azide and 0.2% protein carrier and should be stored at 4-8^oC. Conjugated antibodies should not be frozen. Reagents are stable for the period shown on the vial label when stored properly.

Ordering Information:	Form	Vial Size	Catalog #
	FITC	100 Test	0562
	Biotin	100 Test	0563
	PE	100 Test	0564

For research use only. Not for use in human diagnostics or therapeutics.

Exalpha Biologicals, Inc., 86 Rosedale Rd. Watertown, MA 02472
Tel: 800.395.1137 or 617.924.3400, Fax: 866.924.5100 or 617.924.5100, Web:www.exalpha.com

REFERENCES:

1. Generation of Monoclonal Antibodies to a Human Natural Killer Clone. Characterization of Two Natural Killer-Associated Antigens, NKH1 and NKH2, Expressed on Subset of Large Granular Lymphocytes. Hercend, T., Griffin, J.D., Benussan, A., Schmidt, R.E., Edson, M.A., Brennen, A., Murray, C., Daley, J.F., Schlossman, S.F., and Ritz, J.. J. Clin. Invest. 1985 75:932.
2. The relationship of CD16 (Leu-11) and Leu-19 (NKH-1) Antigen Expression on Human Peripheral Blood Nk Cells and Cytotoxic T Lymphocytes. Lanier, L.L., Le, A.M., Civin, C.I., Loken, M.R., and Phillips, J.H., J. Immunol. 1986 136:4480.
3. A subset of natural killer cells in peripheral blood displays a mature T cell phenotype. Schmidt RE, Murray C, Daley JF, Schlossman SF, and Ritz J, J Ex Med 1986 164: 351-356
4. Phenotypic and functional deficiency of natural killer cells in patients with chronic fatigue syndrome. Caligiuri M, Murray C, Buchwald D, Levine H, Cheney P, Peterson D, Komaroff AL, and Ritz J, J Immunol 1987 139:3306-3319
5. Hercend T., and Schmidt, R.E., Immunol. Today 9,291,1988.

For research use only. Not for use in human diagnostics or therapeutics.

Exalpha Biologicals, Inc., 86 Rosedale Rd. Watertown, MA 02472
Tel: 800.395.1137 or 617.924.3400, Fax: 866.924.5100 or 617.924.5100, Web:www.exalpha.com