

Bi-Test™ CD3 FITC - HLA-DR PE

Product: Anti-human CD3 FITC T cell Monoclonal Antibody and HLA-DR PE B Lymphocytes Monoclonal Antibody.

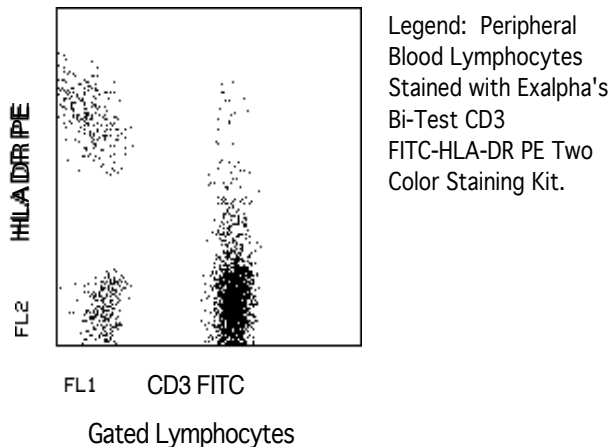
Description: The CD3 epitope is expressed on the epsilon chain of the CD3/T cell antigen receptor (TcR) complex. CD3 is present on 65-85% of thymocytes and has a mitogenic effect on peripheral blood T cells. Identification of human T cells expressing the 22-28,000 M.W. surface antigen. Identification of human B cell and T cell subset associated approximately 10% of peripheral blood lymphocytes 28-34,000 M.W. surface antigen, also low density on monocytes and macrophages.

Isotypes: Mouse IgG-1 kappa (FITC) and Mouse IgG-2a kappa (PE)

Clones: M2AB (CD3 FITC) and 423L (HLA-DR PE)

Applications: Monitoring of T cells subsets in peripheral blood; Characterization of subtypes of T cell leukemia's and lymphomas; Studies of AIDS/HIV virus infection; Analysis of CD3 complex related to the T cell antigen receptor; Monitoring of B cells in peripheral blood; Study of B cell activation; Study of B cell neoplasms.

Use: PBMC: Add 10 µl of MAB/10⁶ PBMC in 100 µl PBS. Mix gently and incubate for 15 minutes at 2^o to 8^oC. Wash twice with PBS and analyze or fix with 0.5% v/v of paraformaldehyde in PBS and analyze. WHOLE BLOOD: Add 10 µl of MAB/100 µl of whole blood. Mix gently and incubate for 15 minutes at room temperature 20^oC. Lyse the whole blood. Wash once with PBS and analyze or fix with 0.5% v/v of paraformaldehyde in PBS and analyze. See instrument manufacturer's instructions for Lysed Whole Blood and Immunofluorescence analysis with a flow cytometer or microscope.



Storage: Antibodies are supplied in PBS, 0.08% sodium azide and 0.2% protein carrier for FITC and PE. Antibodies should be stored at 4-8^oC. Monoclonal antibodies should not be frozen. Reagents are stable for the period shown on the vial label when stored properly.

Ordering Information: **Form** **Vial Size** **Catalog #**

For research use only. Not for use in human diagnostics or therapeutics.

Bi-Test™	50 Test	03DRs
Bi-Test™	100 Test	03DR

For research use only. Not for use in human diagnostics or therapeutics.

Exalpha Biologicals, Inc., 2 Shaker Rd, #B101, Shirley, MA 01464
Tel: 800.395.1137 or 978.425.1370, Fax: 866.924.5100 or 978.425.1376, Web: www.exalpha.com

REFERENCES:

1. Knowles RW. Immunochemical analysis of the T cell-specific antigens. In : Reinhert EL, Haynes BF, Nadl LM and Bernstein ID. eds. Leukocyte Typing II, Human T Lymphocytes. New York, NY: Springer-Verlag; 1986:259
2. Kurrle R. Cluster Report:CD3. In:Knapp W, Dorken B, Gilks WR, Reiber EP, Schmidt RE, Stein H, and von dem Borne AEG Kr, eds. Leukocyte Typing IV, White cell Differentiation Antigens. Oxford, England: Oxford Press 1989:293
3. Signal transduction via CD4,CD8 and CD28 in mature and immature thymocytes. Implications for thymic selection. Turka LA, Linsley PS, Paine R 3d, Schieven GI, Thompson GB, Ledbetter JA, J. Immunol. 1991 Mar :146(5): 1428-36
4. T cell receptor/CD3-signaling induces death by apoptosis in human T cell receptor gamma delta + Tcells. Janssen O, Wesselborg S, Heckl-Ostreicher B, Pechhold K, Bender A, Schondelmaier S, Moldenhauer G, Kabelitz D I Immunol. 1991 Jan146(1):35-9
5. Clonal analysis of human CD4-CD8-CD3- thymocytes highly purified from postnatal thymus Hori T, Spits H J. Immunol. 1991 Apr 146(7):2116-21
6. Molecular cloning of the CD3 zeta subunit identifies a CD3 zeta-related product in thymus-derived cells Jin YJ, Claton LK, Howard FD, Koyasu S, Sieh M, Steinbrich R, Tarr GE, Reinherz EL. Proc Natl Acad Sci usa 1990 Ma: 87(9):3319-23
7. IL-4 and granulocyte-macrophage colony-stimulating factor selectively increase HLA-DR and HLA-DP antigens but not HLA-DQ antigens on human monocytes. Gerrard T.L., Dyer D.R., Mostowski H.S., J. Immunol. 1990 June, 1;144(12): 4670-4
8. Structural requirements for pairing of alpha and beta chains in HLA-DR and HLA-DP molecules. Karp D.R., Teletski C.L., Jaraquemada D., Maloy W.L., Coligan J.E., Long E.O., J. Exp. Med. 1990 March ;171(3):615-28
9. Trans-activation of HLA-DR gene by hepatitis B virus X gene product. Hu K.Q., Vierling J.M., Siddiqui A., Proc. Natl. Acad. Sci. USA 1990 SEPT.; 87(18):7140-4
10. Purified primitive human hematopoietic progenitor cells with long-term in vitro repopulating capacity adhere selectively to irradiated bone marrow stroma. Verfaillie C., Blakolmer K., McGlave P., J. Exp. Med. 1990 Aug.: 172(2):509-2
11. Defective clonogenic potential of CD8+ T lymphocytes in patients with AIDS. Expansion in vivo of a nonclonogenic CD3+ CD8+ DR+ CD25- T cell population. Pantaleo G., Keonig S., Baseler M., Lane H.C., Fauci A.S., J. Immunol. 1990 Mar ; 144(5):1696-704
12. Increased circulating HLA-DR+ CD4+ T cells in systemic lupus erythematosus: alterations associated with prednisolone therapy. Raziuddin S., Nur M.A., al-Wabel A.A., Scand. J. Immunol. 1990 Feb.:31(2):139-45

For research use only. Not for use in human diagnostics or therapeutics.

Exalpha Biologicals, Inc., 86 Rosedale Rd. Watertown, MA 02472
Tel: 800.395.1137 or 617.924.3400, Fax: 866.924.5100 or 617.924.5100, Web:www.exalpha.com