

CD35

Product: Anti human Complement Receptor Type 1 (CR-1) Monoclonal Antibody. CR-1 is the receptor for the C3b component of complement.

Description: Complement Receptor-1 (CR-1), CD35 complex is four different allotypes (C,A,B,D) C is 160 kDa; A is 190 kDa; B is 220 kDa and D is 250 kDa. It is involved in the processing of immune complexes, promoting of binding and phagocytosis of C3b complexes and inhibition of complement activation. CR-1 is on neutrophils, eosinophils, monocytes, B-cells, some NK-cells, erythrocytes, myeloid leukemias, follicular dendritic reticulum cells and is negative on basophils.

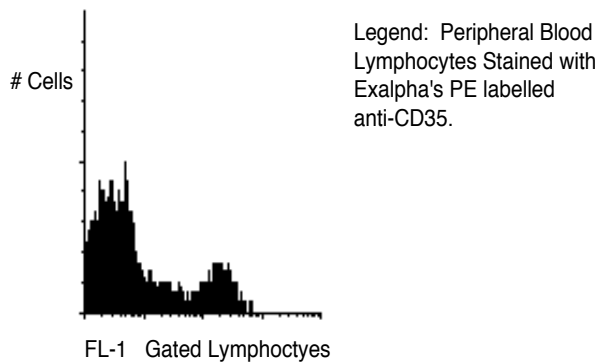
Isotype: Mouse IgG-1 kappa

Clone: AR2

Applications: Complement receptors in autoimmune disorders; Monitoring of cellular subsets in peripheral blood; Characterization of leukemia's and lymphomas; Studies on Immune complex diseases; Investigation of Phagocytosis; Inhibition of complement activation.

Use PBMC: Add 10 μ l of MAB/ 10^6 PBMC in 100 μ l PBS. Mix gently and incubate for 15 minutes at 2^o to 8^oC. Wash twice with PBS and analyze or fix with 0.5% v/v of paraformaldehyde in PBS and analyze.

WHOLE BLOOD: Add 10 μ l of MAB/100 μ l of whole blood. Mix gently and incubate for 15 minutes at room temperature (20^oC). Lyse the whole blood. Wash once with PBS and analyze or fix with 0.5% v/v of paraformaldehyde in PBS and analyze. See instrument manufacturer's instructions for Lysed Whole Blood and Immunofluorescence analysis with a flow cytometer or microscope.



Storage: Unconjugated antibodies supplied in PBS and 0.08% sodium azide and should be stored at -20^oC. Conjugated antibodies are supplied in PBS, 0.08% sodium azide and 0.2% protein carrier and should be stored at 4-8^oC. Conjugated antibodies should not be frozen. Reagents are stable for the period shown on the vial label when stored properly.

Ordering Information:	Form	Vial Size	Catalog #
	Pure	100 μ g	0351
	FITC	100 Test	0352
	Biotin	100 Test	0353
	PE	100 Test	0354

For research use only. Not for use in human diagnostics or therapeutics.

REFERENCES:

1. Differential effects of the stimulation of complement receptors CR1 (CD35) and CR2 (CD21) on cell proliferation and intracellular Ca²⁺ mobilization of chronic lymphocytic leukemia B cells. Hivroz C; Fischer E; Kazatchkine MD; Grillot-Courvalin C J Immunol 1991 Mar 1;146(6):1766-72
2. The C3b/C4b receptor is recognized by the Knops, McCoy, Swain-langley, and York blood group antisera. Moulds JM; Nickells MW; Moulds JJ; Brown MC; Atkinson JP J Exp Med 1991 May ;173(5):1159-63
3. Deduction from Wilms' tumour that glomerular podocytes produce the basement membrane material bearing Goodpasture determinants. Droz D; Diebold N; Jan D; Jaubert F J Pathol 1990 Dec;162(4):323-7
4. Purification and characterization of IgG immunconglutinins from patients with systemic lupus erythematosus: implications for a regulatory function. Nilsson B; Ekdahl KN; Svarvare M; Bjel Clin Exp Immunol 1990 No;82(2):262-7
5. Granulocyte-macrophage colony-stimulating factor increases synthesis and expression of CR1 and CR3 by human peripheral blood neutrophils. Neuman E; Huleatt JW; Jack RM J Immunol 1990 Nov 1;145(10):3325-32
6. Expression of CR1 (CD35) mRNA in podocytes from adult and fetal human kidneys. Appay MD; Kazatchkine MD; Levi-Strauss M; Hinglais N; Bariety J Kidney Int 1990 Aug;38(2):289-93
7. Complement receptor type 1 (C3b/C4b receptor; CD35) and complement receptor type 2 (C3d/Epstein-Barr virus receptor; CD21). Fearon DT; Ahearn JM Curr Top Microbiol Immunol 1990;153 p83-98