

CD25

Product: Anti-human Interleukin-2 Receptor Lymphocytes Monoclonal Antibody.

Description Identification of human receptor for Interleukin-2 (IL-2R) expressing the 55,000 M.W. surface antigen.

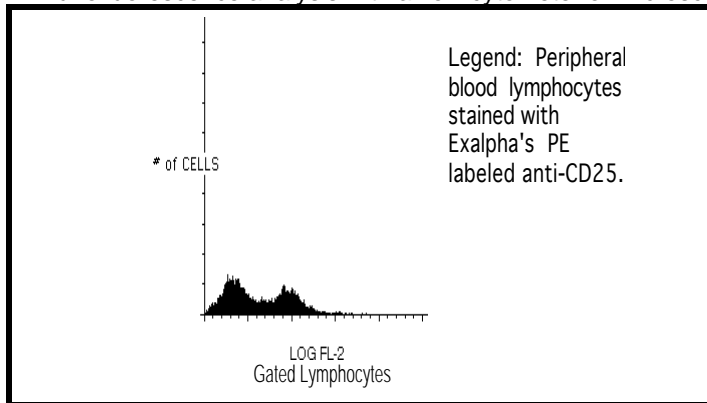
Isotype: Mouse IgG-1 kappa.

Clone: 1TYV

Applications: Monitoring of activated T cells in peripheral blood; Analysis of NK subsets; Study of B cell activation.

Use: PBMC: Add 10 μ l of MAB/10⁶ PBMC in 100 μ l PBS. Mix gently and incubate for 15 minutes at 2^o to 8^oC. Wash twice with PBS and analyze or fix with 0.5% v/v of paraformaldehyde in PBS and analyze.

WHOLE BLOOD: Add 10 μ l of MAB/100 μ l of whole blood. Mix gently and incubate for 15 minutes at room temperature 20^oC. Lyse the whole blood. Wash once with PBS and analyze or fix with 0.5% v/v of paraformaldehyde in PBS and analyze. See instrument manufacturer's instructions for Lysed Whole Blood and Immunofluorescence analysis with a flow cytometer or microscope.



Storage: Unconjugated antibodies supplied as a 1 mg/ml solution in PBS and 0.08% sodium azide and should be stored at -20^oC. Conjugated antibodies are supplied in PBS, 0.08% sodium azide and 0.2% protein carrier and should be stored at 4-8^oC. Conjugated antibodies should not be frozen. Reagents are stable for the period shown on the vial label when stored properly.

Ordering Information:	Form	Vial Size	Catalog #
	Pure*	100 μ g	0251
	FITC	100 Test	0252
	Biotin	100 Test	0253
	PE	100 Test	0254
	APC	100 Test	AP25

* Pure form tested for Exalpha for cross-reactivity with *Macaca* species monkey.

For research use only. Not for use in human diagnostics or therapeutics.

Exalpha Biologicals, Inc., 86 Rosedale Rd. Watertown, MA 02472
 Tel: 800.395.1137 or 617.924.3400, Fax: 866.924.5100 or 617.924.5100, Web: www.exalpha.com

REFERENCES:

1. A Monoclonal Antibody (Anti-Tac) Reactive with Activated and Functionally Mature Human T Cells. Uchiyama T., Broder S., Waldmann TA, 1981 J. Immunol.126,1393.
2. Direct Demonstration of the Identity of T Cell Growth Factor Binding Protein and the Tac Antigen. Robb RJ, Greene WC, J. Exp. Med. 1983,158;1332.
3. Patients with HIV infection have a reduced proportion of lymphocytes expressing the IL2 receptor p55 chain (TAC, CD25). Zola H., Koh L.Y., Mantzioris B.X., Rhodes D., Clin. Immunol. Immunopathol. 1991 Ap:59(1):16-25.
4. Spontaneous lymphocyte proliferation in HTLV-I/II infection reflects preferential activation of CD8 and CD16/56 cell subsets. Prince H.E., Weber D.M., Jensen E.R., Clin. Immunol. Immunopathol. 1991, May;58(3):419-30.
5. Defective clonogenic potential of CD8+ T lymphocytes in patients with AIDS. Expansion in vivo of a nonclonogenic CD3+ CD8+ DR+ CD25- T cell population. Pantaleo G., Keonig S., Baseler M., Lane H.C., Fauci A.S., J. Immunol. 1990 Mar ; 144(5):1696-704.

For research use only. Not for use in human diagnostics or therapeutics.

Exalpha Biologicals, Inc., 86 Rosedale Rd. Watertown, MA 02472
Tel: 800.395.1137 or 617.924.3400, Fax: 866.924.5100 or 617.924.5100, Web:www.exalpha.com