



CD18

Product: Anti-human LFA-1 beta Monoclonal Antibody.

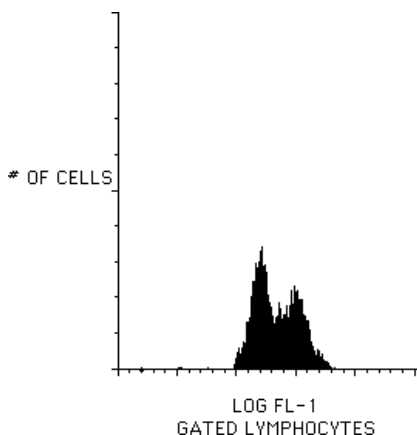
Description: LFA-1 beta is a leukocyte adhesion receptor to (ICAM's) intercellular adhesion molecules. LFA-1 beta is on virtually all peripheral blood lymphocytes, 95,000 M.W. surface antigen.

Isotype: Mouse IgG1 kappa.

Clone: 3E8.

Applications: Monitoring of subsets in peripheral blood; Analysis of CTL-mediated cytotoxicity; Studies of transplantation rejection; Functional studies of cell adhesion molecules.

Use: PBMC: Add 10 μ l of MAB/10⁶ PBMC in 100 μ l PBS. Mix gently and incubate for 15 minutes at 2^o to 8^oC. Wash twice with PBS and analyze or fix with 0.5% v/v of paraformaldehyde in PBS and analyze. WHOLE BLOOD: Add 10 μ l of MAB/100 μ l of whole blood. Mix gently and incubate for 15 minutes at room temperature 20^oC. Lyse the whole blood. Wash once with PBS and analyze or fix with 0.5% v/v of paraformaldehyde in PBS and analyze. See instrument manufacturers instructions for Lysed Whole Blood and Immunofluorescence analysis with a flow cytometer or microscope.



Legend: Peripheral Blood Lymphocytes Stained with Exalpa's FITC Labeled anti- CD18.

Storage: Unconjugated antibodies supplied as a 1 mg/ml solution PBS and 0.08% sodium azide and should be stored at -20^oC. Conjugated antibodies are supplied in PBS, 0.08% sodium azide and 0.2% protein carrier and should be stored at 4-8^oC. Conjugated antibodies should not be frozen. Reagents are stable for the period shown on the vial label when stored properly.

Ordering Information:	Form	Vial Size	Catalog #
	Pure	100 μ g	0181
	FITC	100 Test	0182
	Biotin	100 Test	0183
	PE	100 Test	0184

For research use only. Not for use in human diagnostics or therapeutics.

REFERENCES:

1. CD11c/CD18 on neutrophils recognizes a domain at the N terminus of the alpha chain of fibrinogen. Loike, J.D., Sodeik, B., Cao, L., Leucona, S., Weitz, J.I., Detmers, P.A., Wright, S.D., Silverstein, S.C.. Proc. Natl. Acad. Sci. USA, 1991 Feb; 88(3):1044-8.
2. T-cell receptor cross-linking transiently stimulates adhesiveness through LFA-1. Dustin, M.L. and Springer, T.A.. Nature. 1989;341:619.
3. Coupling of the adhesive receptor CD11/CD18 to functional enhancement of effector macrophage tissue factor response. Fan, S.T. and Edgington, T.S.. J. Clin. Invest. 1991 Jan;87(1):50-7.
4. Leukocyte Adhesion Deficiency: an inherited defect in Mac-1, LFA-1, and p150,95 glycoproteins. Anderson, D.C. and Springer, T.A.. Ann. Rev. Med. 1987;38:175.
5. Two pathways of CD11b/CD18-mediated neutrophil aggregation with different involvement of protein kinase C-dependent phosphorylation. Merrill, J.T., Slade, S.G., Weissman, G., Winchester, R., Buyon, J.P.. J. Immunology. 1990 Oct.1;145(8):2608-15.
6. Tumor necrosis factor-induced degranulation in adherent human neutrophils is dependent on CD11b/CD18-integrin-triggered oscillations of cytosolic free Ca²⁺. Richter, J., Ng-Sikorski, J., Olsson, I., Andersson, T.. Proc. Natl. Acad. Sci. USA, 1990 Dec;87(23):9472-6.

For research use only. Not for use in human diagnostics or therapeutics.

Exalpha Biologicals, Inc., 86 Rosedale Rd. Watertown, MA 02472
Tel: 800.395.1137 or 617.924.3400, Fax: 866.924.5100 or 617.924.5100, Web: www.exalpha.com