

## Bi-Test™ CD3 FITC - CD8 PE

**Product:** Anti-human CD3 FITC T cell Monoclonal Antibody and CD8 PE T & NK Lymphocytes Monoclonal Antibody.

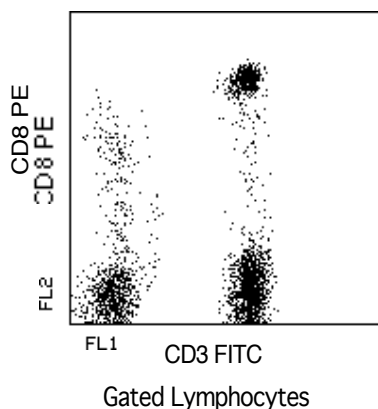
**Description:** The CD3 epitope is expressed on the epsilon chain of the CD3/T cell antigen receptor (TcR) complex. CD3 is present on 65-85% of thymocytes and has a mitogenic effect on peripheral blood T cells. Identification of human T cells expressing the 22-28,000 M.W. surface antigen. CD 8 identifies suppressor / cytotoxic human T cells expressing the 32 and 43,000 M.W. surface antigen.

**Isotypes:** Mouse IgG-1 kappa (FITC) and Mouse IgG-1 kappa (PE)

**Clones:** M2AB (CD3 FITC) and 17D8 (CD8 PE)

**Applications:** Monitoring of T cells subsets in peripheral blood; Analysis of T cell subsets involved in suppressor/ cytotoxic functions; Characterization of subtypes of T cell leukemia's and lymphomas; Studies of AIDS/HIV virus infection; Analysis of CD3 complex related to the T cell antigen receptor; Analysis of NK subsets; Study of cell mediated cytotoxicity.

**Use:** PBMC: Add 10  $\mu$ l of MAB/10<sup>6</sup> PBMC in 100  $\mu$ l PBS. Mix gently and incubate for 15 minutes at 2<sup>o</sup> to 8<sup>o</sup>C. Wash twice with PBS and analyze or fix with 0.5% v/v of paraformaldehyde in PBS and analyze. WHOLE BLOOD: Add 10  $\mu$ l of MAB/100  $\mu$ l of whole blood. Mix gently and incubate for 15 minutes at room temperature 20<sup>o</sup>C. Lyse the whole blood. Wash once with PBS and analyze or fix with 0.5% v/v of paraformaldehyde in PBS and analyze. See instrument manufacturer's instructions for Lysed Whole Blood and Immunofluorescence analysis with a flow cytometer or microscope.



Legend: Peripheral Blood Lymphocytes Stained with Exalpha's Bi-Test CD3 FITC-CD8 PE Two Color Staining Kit.

**Storage:** Antibodies are supplied in PBS, 0.08% sodium azide and 0.2% protein carrier for FITC and PE. Antibodies should be stored at 4-8<sup>o</sup>C. Monoclonal antibodies should not be frozen. Reagents are stable for the period shown on the vial label when stored properly.

**For research use only. Not for use in human diagnostics or therapeutics.**

<b>Ordering Information:</b>	<b>Form</b>	<b>Vial Size</b>	<b>Catalog #</b>
	Bi-Test™	50 Test	0038s
	Bi-Test™	100 Test	0038

**For research use only. Not for use in human diagnostics or therapeutics.**

Exalpha Biologicals, Inc., 2 Shaker Rd, #B101, Shirley, MA 01464  
Tel: 800.395.1137 or 978.425.1370, Fax: 866.924.5100 or 978.425.1376, Web: [www.exalpha.com](http://www.exalpha.com)

## REFERENCES:

1. Knowles RW. Immunochemical analysis of the T cell-specific antigens. In : Reinhert EL, Haynes BF, Nadl LM and Bernstein ID. eds. Leukocyte Typing II, Human T Lymphocytes. New York, NY: Springer-Verlag; 1986:259
2. Kurre R. Cluster Report:CD3. In:Knapp W, Dorken B, Gilks WR, Reiber EP, Schmidt RE, Stein H, and von dem Borne AEG Kr, eds. Leukocyte Typing IV, White cell Differentiation Antigens. Oxford, England: Oxford Press 1989:293
3. Signal transduction via CD4,CD8 and CD28 in mature and immature thymocytes. Implications for thymic selection. Turka LA, Linsley PS, Paine R 3d, Schieven GI, Thompson GB, Ledbetter JA, J. Immunol. 1991 Mar :146(5): 1428-36
4. T cell receptor/CD3-signaling induces death by apoptosis in human T cell receptor gamma delta + T cells. Janssen O, Wesselborg S, Heckl-Ostreicher B, Pechhold K, Bender A, Schondelmaier S, Moldenhauer G, Kabelitz D J Immunol. 1991 Jan146(1):35-9
5. Clonal analysis of human CD4-CD8-CD3- thymocytes highly purified from postnatal thymus Hori T, Spits H J. Immunol. 1991 Apr 146(7):2116-21
6. Molecular cloning of the CD3 zeta subunit identifies a CD3 zeta-related product in thymus-derived cells Jin YJ, Claton LK, Howard FD, Koyasu S, Sieh M, Steinbrich R, Tarr GE, Reinherz EL. Proc Natl Acad Sci usa 1990 Ma: 87(9):3319-23
7. Induction of CD4 and Susceptibility to HIV-1 Infection in Human CD8+ T Lymphocytes by Human Herpesvirus 6. Lusso,P., De Maria,A., Malnati,M., Lori,F., DeRocco,S.E., Baseler,M., Gallo,R.C., Nat. 349(6309):533-5,1991
8. Evolutionary Conservation of Surface Molecules that Distinguish T Lymphocyte Helper/Inducer and T Cytotoxic/Suppressor Subpopulations in Mouse and Man. Ledbetter,J.A., Evans,R.L., Lipinski,M., Cunningham-Rundles,C., Good,R.A., and Herzenberg,L.A., J. Exp. Med. 153,310, 1981
9. Circulating Antigen-Specific Suppressor T Cells in a Healthy Woman: Mechanism of Action and Isolation with a Monoclonal Antibody. Engleman,E.G.,Benike,C.J.,and Evans,R.L., Clin. Res. 29, 365a 1981
10. Induction of Immunoglobulin Secreting Cells in the Allogeneic Mixed Leukocyte Reaction: Regulation by Helper and Suppressor Lymphocyte Subsets in Man. Kotzin,B.L., Benike,C.J. and Engleman,E.G., J. Imm. 127,931,1981
11. CD4 and CD8 molecules can physically associate with the same T-cell receptor. Gallagher,P.F., Fazekas de St. Groth,B., Miller, J.F.A.P., Proc. Nat. Acad. Sci. 1989,86:10044.

**For research use only. Not for use in human diagnostics or therapeutics.**

Exalpha Biologicals, Inc., 2 Shaker Rd, #B101, Shirley, MA 01464  
Tel: 800.395.1137 or 978.425.1370, Fax: 866.924.5100 or 978.425.1376, Web: [www.exalpha.com](http://www.exalpha.com)