

CD3

Product: Anti-human T cell monoclonal antibody.

Description: The CD3 epitope is expressed on the epsilon chain of the CD3/T cell antigen receptor (TcR) complex. CD3 is present on 65-85% of thymocytes and has a mitogenic effect on peripheral blood T cells. Identification of human T cells expressing the 22-28,000 M.W. surface antigen.

Isotype: Mouse IgG-1 kappa.

Clone: M2AB

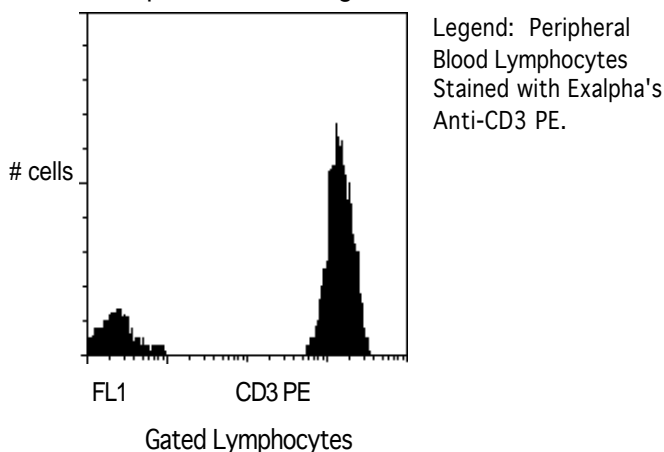
Applications: Monitoring of T cells subsets in peripheral blood; Characterization of subtypes of T cell leukemia's and lymphomas; Studies of AIDS/HIV virus infection; Analysis of CD3 complex related to the T cell antigen receptor.

Use: PBMC: Add 10 μ l of MAB/ 10^6 PBMC in 100 μ l PBS. Mix gently and incubate for 15 minutes at 2^o to 8^o C. Wash twice with PBS and analyze or fix with 0.5% v/v of paraformaldehyde in PBS and analyze.

WHOLE BLOOD: Add 10 μ l of MAB/100 μ l of whole blood. Mix gently and incubate for 15 minutes at room temperature 20^oC. Lyse the whole blood. Wash once with PBS and analyze or fix with 0.5% v/v of paraformaldehyde in PBS and analyze. See instrument manufacturer's instructions for Lysed Whole Blood and Immunofluorescence analysis with a flow cytometer or microscope.

ALLOPHYCOCYANIN: (APC) conjugates are analyzed in multi-color flow cytometry with instruments equipped with a second laser and proper filters. Laser excitation is at 633 nm with a Helium Neon (HeNe) laser or a 600-640 nm (633 nm) range for a Dye laser. Peak fluorescence emission is at 660 nm.

RPE-Cy-5*: Use as above, however use only 5 μ l per test rather than 10 μ l. Excites at 488nm and emits at 670nm. Store protected from light.



Storage: Conjugated antibodies are supplied in PBS, 0.08% sodium azide and 0.2% protein carrier and should be stored at 4-8^oC. Conjugated antibodies should not be frozen. Reagents are stable for the period shown on the vial label when stored properly.

For research use only. Not for use in human diagnostics or therapeutics.

Ordering Information:	Form	Vial Size	Catalog #
	Pure	100 µg	0031
	FITC	100 Test	0032
	Biotin	100 Test	0033
	RPE	100 Test	0034
	APC	100 Test	AP03
	RPE-Cy-5	100 Test	X1039

REFERENCES:

1. Knowles RW. Immunochemical analysis of the T cell-specific antigens. In : Reinhert EL, Haynes BF, Nadl LM and Bernstein ID. eds. Leukocyte Typing II, Human T Lymphocytes. New York, NY: Springer-Verlag; 1986:259.
2. Kurrle R. Cluster Report:CD3. In:Knapp W, Dorken B, Gilks WR, Reiber EP, Schmidt RE, Stein H, and von dem Borne AEG Kr, eds. Leukocyte Typing IV, White cell Differentiation Antigens. Oxford, England: Oxford Press 1989:293.
3. Signal transduction via CD4,CD8 and CD28 in mature and immature thymocytes. Implications for thymic selection. Turka LA, Linsley PS, Paine R 3d, Schieven GI, Thompson GB, Ledbetter JA, J. Immunol. 1991 Mar :146(5): 1428-36.
4. T cell receptor/CD3-signaling induces death by apoptosis in human T cell receptor gamma delta + Tcells. Janssen O, Wesselborg S, Heckl-Ostreicher B, Pechhold K, Bender A, Schondelmaier S, Moldenhauer G, Kabelitz D I Immunol. 1991 Jan146(1):35-9.
5. Clonal analysis of human CD4-CD8-CD3- thymocytes highly purified from postnatal thymus Hori T, Spits H J. Immunol. 1991 Apr 146(7):2116-21.
6. Molecular cloning of the CD3 zeta subunit identifies a CD3 zeta-related product in thymus-derived cells Jin YJ, Claton LK, Howard FD, Koyasu S, Sieh M, Steinbrich R, Tarr GE, Reinherz EL. Proc Natl Acad Sci USA 1990 Ma: 87(9):3319-23.
7. Immunofluorescence Measurement in a Flow Cytometer using Low-Power Helium Neon Laser Excitation. Shapiro, H.M, Glazer, A.N., Christenson, L., Williams, J.M., and Strom, T. B. Cytometry 4,276, 1983.
8. Comparison of Helium Neon and Dye lasers for Excitation of Allophycocyanin. Loken, M.R., Kiej, J.F. and Kelly, K.,A. Cytometry 8, 96, 1987.
9. Cy-5* Portions of this product is manufactured under license from Carnegie Mellon University, U.S. Patent Number 5,268,486.

For research use only. Not for use in human diagnostics or therapeutics.

Exalpha Biologicals, Inc., 86 Rosedale Rd. Watertown, MA 02472
 Tel: 800.395.1137 or 617.924.3400, Fax: 866.924.5100 or 617.924.5100, Web:www.exalpha.com